

For Research Use Only

# HRAS Recombinant Matched Antibody Pair, PBS Only



Catalog Number:MP01568-1

## Capture Antibody Information

**Catalog Number:**  
82682-11-PBS  
**Host:**  
Rabbit  
**Isotype:**  
IgG  
**Purification Method:**  
Protein A purification

**Clone ID:**  
242062B5  
**Reactivity:**  
human  
**GenBank:**  
BC006499

**Conjugate:**  
Unconjugated  
**Full name:**  
v-Ha-ras Harvey rat sarcoma viral oncogene homolog  
**Gene ID:**  
3265

## Detection Antibody Information

**Catalog Number:**  
82682-10-PBS  
**Host:**  
Rabbit  
**Isotype:**  
IgG  
**Purification Method:**  
Protein A purification

**Clone ID:**  
242062A4  
**Reactivity:**  
human  
**GenBank:**  
BC006499

**Conjugate:**  
Unconjugated  
**Full name:**  
v-Ha-ras Harvey rat sarcoma viral oncogene homolog  
**Gene ID:**  
3265

## Applications

**Tested Applications:**  
Sandwich ELISA

**Range:**  
31.3-2000 pg/mL (Sandwich ELISA)

**Recommended Dilutions:**  
It is recommended that this reagent should be titrated in each testing system to obtain optimal results.

## Product Information

MP01568-1 targets HRAS in immunoassays as a matched antibody pair. Validated in Sandwich ELISA.

Capture antibody: HRAS-Specific Recombinant antibody, PBS Only (Capture) 82682-11-PBS (242062B5). 100 µg. Concentration 1 mg/mL.

Detection antibody: HRAS-Specific Recombinant antibody, PBS Only (Detector) 82682-10-PBS (242062A4). 100 µg. Concentration 1 mg/mL.

Unconjugated rabbit recombinant monoclonal antibody pair in PBS only storage buffer at a concentration of 1 mg/mL, ready for conjugation. Created using Proteintech's proprietary in-house recombinant technology. Recombinant production enables unrivalled batch-to-batch consistency, easy scale-up, and future security of supply.

Matched antibody pairs are designed for use in a variety of assays and platforms that require matched antibody pairs.

Antibody use should be optimized for each application and assay.

## Storage

**Storage:**  
Store at -80°C.  
**The product is shipped with ice packs. Upon receipt, store it immediately at -80°C**  
**Storage buffer:**  
PBS only

For technical support and original validation data for this product please contact:

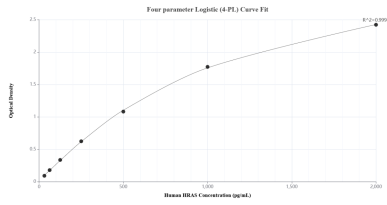
T: 4006900926

E: Proteintech-CN@ptglab.com

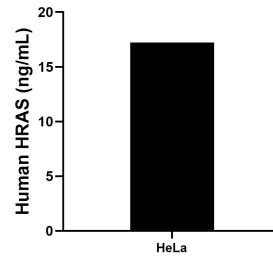
W: ptgcn.com

**This product is exclusively available under Proteintech Group brand and is not available to purchase from any other manufacturer.**

## Selected Validation Data



Sandwich ELISA standard curve of MP01568-1, Human HRAS Recombinant Matched Antibody Pair - PBS only. 82682-11-PBS was coated to a plate as the capture antibody and incubated with serial dilutions of standard SY00167. 82682-10-PBS was HRP conjugated as the detection antibody. Range: 31.3-2000 pg/mL.



The mean HRAS concentration was determined to be 17.2 ng/mL in HeLa cell extract based on a 1.3 mg/mL extract load.