

For Research Use Only

APP Recombinant Matched Antibody Pair, PBS Only



Catalog Number:MP01584-3

Capture Antibody Information

Catalog Number:
84829-1-PBS
Host:
Rabbit
Isotype:
IgG
Purification Method:
Protein A purification

Clone ID:
242316B9
Reactivity:
human
GenBank:
BC065529
Immunogen Catalog Number:
Ag22408

Conjugate:
Unconjugated
Full name:
amyloid beta (A4) precursor protein
Gene ID:
351

Detection Antibody Information

Catalog Number:
84829-3-PBS
Host:
Rabbit
Isotype:
IgG
Purification Method:
Protein A purification

Clone ID:
242316F6
Reactivity:
human
GenBank:
BC065529
Immunogen Catalog Number:
Ag22408

Conjugate:
Unconjugated
Full name:
amyloid beta (A4) precursor protein
Gene ID:
351

Applications

Tested Applications:
Sandwich ELISA

Range:
0.391-25 ng/mL (Sandwich ELISA)

Recommended Dilutions:
It is recommended that this reagent should be titrated in each testing system to obtain optimal results.

Product Information

MP01584-3 targets APP in immunoassays as a matched antibody pair. Validated in Sandwich ELISA.

Capture antibody: APP Recombinant antibody, PBS Only (Capture/Detector) 84829-1-PBS (242316B9). 100 µg. Concentration 1 mg/ml.

Detection antibody: APP Recombinant antibody, PBS Only (Capture/Detector) 84829-3-PBS (242316F6). 100 µg. Concentration 1 mg/ml.

Unconjugated rabbit recombinant monoclonal antibody pair in PBS only storage buffer at a concentration of 1 mg/mL, ready for conjugation. Created using Proteintech's proprietary in-house recombinant technology. Recombinant production enables unrivalled batch-to-batch consistency, easy scale-up, and future security of supply.

Matched antibody pairs are designed for use in a variety of assays and platforms that require matched antibody pairs.

Antibody use should be optimized for each application and assay.

Storage

Storage:
Store at -80°C.
The product is shipped with ice packs. Upon receipt, store it immediately at -80°C
Storage buffer:
PBS only

For technical support and original validation data for this product please contact:

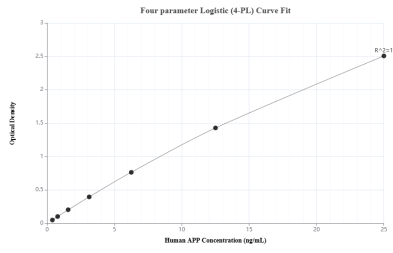
T: 4006900926

E: Proteintech-CN@ptglab.com

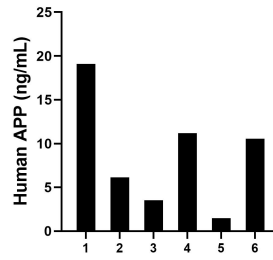
W: ptgcn.com

This product is exclusively available under Proteintech Group brand and is not available to purchase from any other manufacturer.

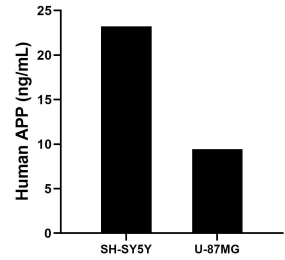
Selected Validation Data



Sandwich ELISA standard curve of MP01584-3, Human APP Recombinant Matched Antibody Pair - PBS only. 84829-1-PBS was coated to a plate as the capture antibody and incubated with serial dilutions of standard Ag22408. 84829-3-PBS was HRP conjugated as the detection antibody. Range: 0.391-25 ng/mL



Serum of six individual healthy human donors was measured. The human APP concentration of detected samples was determined to be 8.66 ng/mL with a range of 1.49 - 19.08 ng/mL.



The mean APP concentration was determined to be 23.24 ng/mL in SH-SY5Y cell extract based on a 1.0 mg/mL extract load and 9.46 ng/mL in U-87MG cell extract based on a 1.0 mg/mL extract load.