

L3MBTL2 Recombinant Matched Antibody Pair, PBS Only

Catalog Number: MP01585-1

Capture Antibody Information

Catalog Number: 84828-2-PBS	Clone ID: 242288H1	Conjugate: Unconjugated
Host: Rabbit	Reactivity: human	Full name: l(3)mbt-like 2 (Drosophila)
Isotype: IgG	GenBank: BC017191	Gene ID: 83746
Purification Method: Protein A purification	Immunogen Catalog Number: Ag19570	

Detection Antibody Information

Catalog Number: 84828-1-PBS	Clone ID: 242288E7	Conjugate: Unconjugated
Host: Rabbit	Reactivity: human	Full name: l(3)mbt-like 2 (Drosophila)
Isotype: IgG	GenBank: BC017191	Gene ID: 83746
Purification Method: Protein A purification	Immunogen Catalog Number: Ag19570	

Applications

Tested Applications: Cytometric bead array, Sandwich ELISA	Range: 0.781-100 ng/mL (Cytometric Bead Array) 0.781-50 ng/mL (Sandwich ELISA)	Recommended Dilutions: It is recommended that this reagent should be titrated in each testing system to obtain optimal results.
--	---	---

Product Information

MP01585-1 targets L3MBTL2 in immunoassays as a matched antibody pair. Validated in Cytometric bead array, Sandwich ELISA.

Capture antibody: L3MBTL2 Recombinant antibody, PBS Only (Capture) 84828-2-PBS (242288H1). 100 µg. Concentration 1 mg/mL.

Detection antibody: L3MBTL2 Recombinant antibody, PBS Only (Detector) 84828-1-PBS (242288E7). 100 µg. Concentration 1 mg/mL.

Unconjugated rabbit recombinant monoclonal antibody pair in PBS only storage buffer at a concentration of 1 mg/mL, ready for conjugation. Created using Proteintech's proprietary in-house recombinant technology. Recombinant production enables unrivalled batch-to-batch consistency, easy scale-up, and future security of supply.

Matched antibody pairs are designed for use in a variety of assays and platforms that require matched antibody pairs.

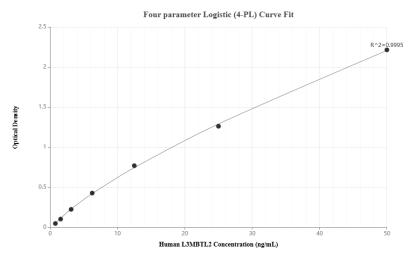
Antibody use should be optimized for each application and assay.

Storage

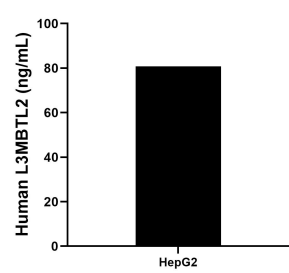
Storage:
Store at -80°C.
The product is shipped with ice packs. Upon receipt, store it immediately at -80°C

Storage buffer:
PBS only

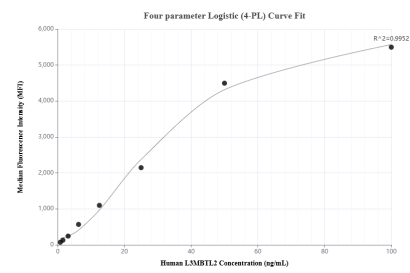
Selected Validation Data



Sandwich ELISA standard curve of MP01585-1, Human L3MBTL2 Recombinant Matched Antibody Pair - PBS only. 84828-2-PBS was coated to a plate as the capture antibody and incubated with serial dilutions of standard Ag19570. 84828-1-PBS was HRP conjugated as the detection antibody. Range: 0.781-50 ng/mL



The mean L3MBTL2 concentration was determined to be 80.77 ng/mL in HepG2 cell extract based on a 1.0 mg/mL extract load.



Cytometric bead array standard curve of MP01585-1, L3MBTL2 Recombinant Matched Antibody Pair, PBS Only. Capture antibody: 84828-2-PBS. Detection antibody: 84828-1-PBS. Standard: Ag19570. Range: 0.781-100 ng/mL