

For Research Use Only

CD16a Recombinant Matched Antibody Pair, PBS Only



Catalog Number:MP01617-3

Capture Antibody Information

Catalog Number:
84897-2-PBS
Host:
Rabbit
Isotype:
IgG
Purification Method:
Protein A purification

Clone ID:
242426E9
Reactivity:
human
GenBank:

Conjugate:
Unconjugated
Full name:
Fc fragment of IgG, low affinity IIIa, receptor (CD16a)
Gene ID:
2214

Detection Antibody Information

Catalog Number:
84897-4-PBS
Host:
Rabbit
Isotype:
IgG
Purification Method:
Protein A purification

Clone ID:
242426A11
Reactivity:
human
GenBank:

Conjugate:
Unconjugated
Full name:
Fc fragment of IgG, low affinity IIIa, receptor (CD16a)
Gene ID:
2214

Applications

Tested Applications:
Sandwich ELISA

Range:
156.3-5000 pg/mL (Sandwich ELISA)

Recommended Dilutions:
It is recommended that this reagent should be titrated in each testing system to obtain optimal results.

Product Information

MP01617-3 targets CD16a in immunoassays as a matched antibody pair. Validated in Sandwich ELISA.

Capture antibody: CD16a Recombinant antibody, PBS Only (Capture/Detector) 84897-2-PBS (242426E9). 100 µg. Concentration 1 mg/ml.

Detection antibody: CD16a Recombinant antibody, PBS Only (Detector) 84897-4-PBS (242426A11). 100 µg. Concentration 1 mg/ml.

Unconjugated rabbit recombinant monoclonal antibody pair in PBS only storage buffer at a concentration of 1 mg/mL, ready for conjugation. Created using Proteintech's proprietary in-house recombinant technology. Recombinant production enables unrivalled batch-to-batch consistency, easy scale-up, and future security of supply.

Matched antibody pairs are designed for use in a variety of assays and platforms that require matched antibody pairs.

Antibody use should be optimized for each application and assay.

Storage

Storage:
Store at -80°C.
The product is shipped with ice packs. Upon receipt, store it immediately at -80°C
Storage buffer:
PBS only

For technical support and original validation data for this product please contact:

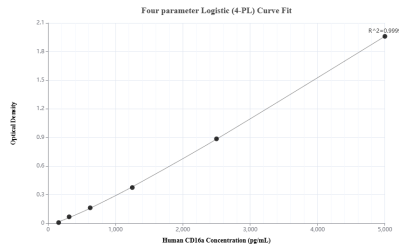
T: 4006900926

E: Proteintech-CN@ptglab.com

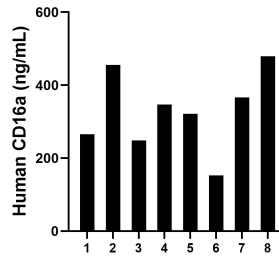
W: ptgcn.com

This product is exclusively available under Proteintech Group brand and is not available to purchase from any other manufacturer.

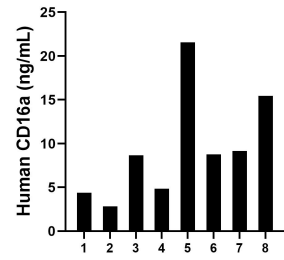
Selected Validation Data



Sandwich ELISA standard curve of MP01617-3, Human CD16a Recombinant Matched Antibody Pair - PBS only. 84897-2-PBS was coated to a plate as the capture antibody and incubated with serial dilutions of standard Eg2488. 84897-4-PBS was HRP conjugated as the detection antibody. Range: 156.3-5000 pg/mL



Serum of eight individual healthy human donors was measured. The human CD16a concentration of detected samples was determined to be 329.57 ng/mL with a range of 152.51- 455.59 ng/mL



Urine of eight individual healthy human donors was measured. The human CD16a concentration of detected samples was determined to be 9.45 ng/mL with a range of 2.83 - 21.56 ng/mL