

For Research Use Only

# AMACR/p504S Recombinant Matched Antibody Pair, PBS Only



Catalog Number:MP01623-3

## Capture Antibody Information

**Catalog Number:**  
84891-4-PBS  
**Host:**  
Rabbit  
**Isotype:**  
IgG  
**Purification Method:**  
Protein A purification

**Clone ID:**  
242456G11  
**Reactivity:**  
human  
**GenBank:**  
BC009471  
**Immunogen Catalog Number:**  
Ag8720

**Conjugate:**  
Unconjugated  
**Full name:**  
alpha-methylacyl-CoA racemase  
**Gene ID:**  
23600

## Detection Antibody Information

**Catalog Number:**  
84891-3-PBS  
**Host:**  
Rabbit  
**Isotype:**  
IgG  
**Purification Method:**  
Protein A purification

**Clone ID:**  
242456G6  
**Reactivity:**  
human  
**GenBank:**  
BC009471  
**Immunogen Catalog Number:**  
Ag8720

**Conjugate:**  
Unconjugated  
**Full name:**  
alpha-methylacyl-CoA racemase  
**Gene ID:**  
23600

## Applications

**Tested Applications:**  
Sandwich ELISA

**Range:**  
7.81-500 ng/mL (Sandwich ELISA)

**Recommended Dilutions:**  
It is recommended that this reagent should be titrated in each testing system to obtain optimal results.

## Product Information

MP01623-3 targets AMACR/p504S in immunoassays as a matched antibody pair. Validated in Sandwich ELISA.

Capture antibody: AMACR/p504S Recombinant antibody, PBS Only (Capture) 84891-4-PBS (242456G11). 100  $\mu$ g. Concentration 1 mg/ml.

Detection antibody: AMACR/p504S Recombinant antibody, PBS Only (Detector) 84891-3-PBS (242456G6). 100  $\mu$ g. Concentration 1 mg/ml.

Unconjugated rabbit recombinant monoclonal antibody pair in PBS only storage buffer at a concentration of 1 mg/mL, ready for conjugation. Created using Proteintech's proprietary in-house recombinant technology. Recombinant production enables unrivalled batch-to-batch consistency, easy scale-up, and future security of supply.

Matched antibody pairs are designed for use in a variety of assays and platforms that require matched antibody pairs.

Antibody use should be optimized for each application and assay.

## Storage

**Storage:**  
Store at -80°C.  
**The product is shipped with ice packs. Upon receipt, store it immediately at -80°C**  
**Storage buffer:**  
PBS only

For technical support and original validation data for this product please contact:

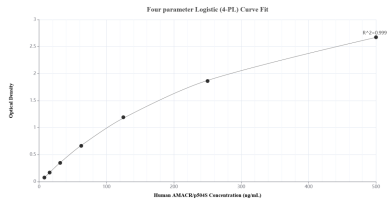
T: 4006900926

E: Proteintech-CN@ptglab.com

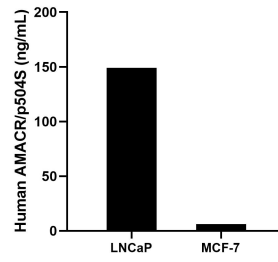
W: ptgcn.com

**This product is exclusively available under Proteintech Group brand and is not available to purchase from any other manufacturer.**

## Selected Validation Data



Sandwich ELISA standard curve of MP01623-3, Human AMACR/p504S Recombinant Matched Antibody Pair - PBS only. 84891-4-PBS was coated to a plate as the capture antibody and incubated with serial dilutions of standard Ag8720. 84891-3-PBS was HRP conjugated as the detection antibody. Range: 7.81-500 ng/mL



The mean AMACR/p504S concentration was determined to be 149.00 ng/mL in LNCaP cell extract based on a 2.00 mg/mL extract load and 6.31 ng/mL in MCF-7 cell extract based on a 1.20 mg/mL extract load.