

For Research Use Only

# E-selectin / CD62E Recombinant Matched Antibody Pair, PBS Only



Catalog Number:MP01636-3

## Capture Antibody Information

Catalog Number:  
84887-3-PBS

Host:  
Rabbit

Isotype:  
IgG

Purification Method:  
Protein A purification

Clone ID:  
241766C9

Reactivity:  
human

GenBank:  
BC142711

Conjugate:  
Unconjugated

Full name:  
selectin E

Gene ID:  
6401

## Detection Antibody Information

Catalog Number:  
98189-1-PBS

Host:  
Rabbit

Isotype:  
IgG

Purification Method:  
Protein A purification

Clone ID:  
241767H6

Reactivity:  
human

GenBank:  
BC142711

Conjugate:  
Unconjugated

Full name:  
selectin E

Gene ID:  
6401

## Applications

Tested Applications:  
Sandwich ELISA

Range:  
9.77-625 pg/mL (Sandwich ELISA)

Recommended Dilutions:  
It is recommended that this reagent should be titrated in each testing system to obtain optimal results.

## Product Information

MP01636-3 targets E-selectin / CD62E in immunoassays as a matched antibody pair. Validated in Sandwich ELISA.  
Capture antibody: SELE Recombinant antibody, PBS Only (Capture) 84887-3-PBS (241766C9). 100  $\mu$ g. Concentration 1 mg/mL.

Detection antibody: E-selectin/CD62E Recombinant antibody, PBS Only (Detector) 98189-1-PBS (241767H6). 100  $\mu$ g. Concentration 1 mg/mL.

Unconjugated rabbit recombinant monoclonal antibody pair in PBS only storage buffer at a concentration of 1 mg/mL, ready for conjugation. Created using Proteintech's proprietary in-house recombinant technology. Recombinant production enables unrivalled batch-to-batch consistency, easy scale-up, and future security of supply.

Matched antibody pairs are designed for use in a variety of assays and platforms that require matched antibody pairs.

Antibody use should be optimized for each application and assay.

## Storage

Storage:  
Store at -80°C.  
**The product is shipped with ice packs. Upon receipt, store it immediately at -80°C**  
Storage buffer:  
PBS only

For technical support and original validation data for this product please contact:

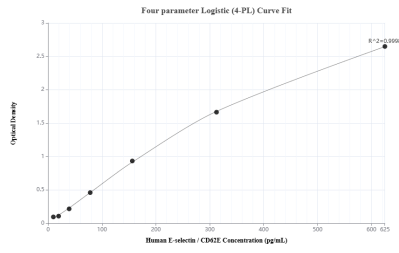
T: 4006900926

E: Proteintech-CN@ptglab.com

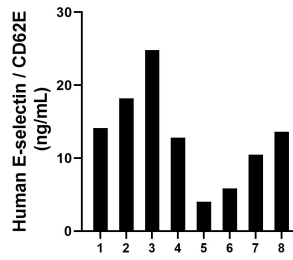
W: ptgcn.com

**This product is exclusively available under Proteintech Group brand and is not available to purchase from any other manufacturer.**

## Selected Validation Data



Sandwich ELISA standard curve of MP01636-3, Human E-selectin / CD62E Recombinant Matched Antibody Pair - PBS only. 84887-3-PBS was coated to a plate as the capture antibody and incubated with serial dilutions of standard RP02341. 98189-1-PBS was HRP conjugated as the detection antibody. Range: 9.77-625 pg/mL



Serum of eight individual healthy human donors was measured. The human E-selectin / CD62E concentration of detected samples was determined to be 12.99 ng/mL with a range of 4.01 - 24.83 ng/mL.