

For Research Use Only

MTHFD1 Recombinant Matched Antibody Pair, PBS Only



Catalog Number:MP01654-3

Capture Antibody Information

Catalog Number:
84884-4-PBS
Host:
Rabbit
Isotype:
IgG
Purification Method:
Protein A purification

Clone ID:
242388A2
Reactivity:
human
GenBank:
BC009806
Immunogen Catalog Number:
Ag1225

Conjugate:
Unconjugated
Full name:
methylene tetrahydrofolate dehydrogenase (NADP+ dependent) 1, methenyl tetrahydrofolate cyclohydrolase, formyl tetrahydrofolate synthetase
Gene ID:
4522

Detection Antibody Information

Catalog Number:
84884-2-PBS
Host:
Rabbit
Isotype:
IgG
Purification Method:
Protein A purification

Clone ID:
242388C7
Reactivity:
human
GenBank:
BC009806
Immunogen Catalog Number:
Ag1225

Conjugate:
Unconjugated
Full name:
methylene tetrahydrofolate dehydrogenase (NADP+ dependent) 1, methenyl tetrahydrofolate cyclohydrolase, formyl tetrahydrofolate synthetase
Gene ID:
4522

Applications

Tested Applications:
Sandwich ELISA

Range:
0.313-20 ng/mL (Sandwich ELISA)

Recommended Dilutions:
It is recommended that this reagent should be titrated in each testing system to obtain optimal results.

Product Information

MP01654-3 targets MTHFD1 in immunoassays as a matched antibody pair. Validated in Sandwich ELISA.

Capture antibody: MTHFD1 Recombinant antibody, PBS Only (Capture) 84884-4-PBS (242388A2). 100 µg. Concentration 1 mg/mL.

Detection antibody: MTHFD1 Recombinant antibody, PBS Only (Detector) 84884-2-PBS (242388C7). 100 µg. Concentration 1 mg/mL.

Unconjugated rabbit recombinant monoclonal antibody pair in PBS only storage buffer at a concentration of 1 mg/mL, ready for conjugation. Created using Proteintech's proprietary in-house recombinant technology. Recombinant production enables unrivalled batch-to-batch consistency, easy scale-up, and future security of supply.

Matched antibody pairs are designed for use in a variety of assays and platforms that require matched antibody pairs.

Antibody use should be optimized for each application and assay.

Storage

Storage:
Store at -80°C.

The product is shipped with ice packs. Upon receipt, store it immediately at -80°C

Storage buffer:
PBS only

For technical support and original validation data for this product please contact:

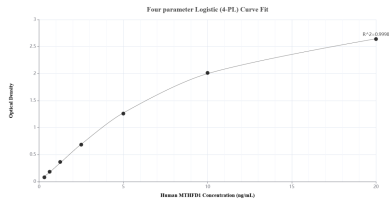
T: 4006900926

E: Proteintech-CN@ptglab.com

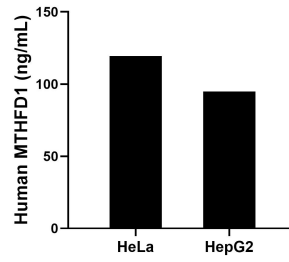
W: ptgcn.com

This product is exclusively available under Proteintech Group brand and is not available to purchase from any other manufacturer.

Selected Validation Data



Sandwich ELISA standard curve of MP01654-3, Human MTHFD1 Recombinant Matched Antibody Pair - PBS only. 84884-4-PBS was coated to a plate as the capture antibody and incubated with serial dilutions of standard Ag1225. 84884-2-PBS was HRP conjugated as the detection antibody. Range: 0.313-20 ng/mL



The mean MTHFD1 concentration was determined to be 119.48 ng/mL in HeLa cell extract based on a 1.00 mg/mL extract load and 94.90 ng/mL in HepG2 cell extract based on a 2.30 mg/mL extract load.