

For Research Use Only

BCL3 Recombinant Matched Antibody Pair, PBS Only



Catalog Number:MP01655-3

Capture Antibody Information

Catalog Number:
84882-4-PBS

Host:
Rabbit

Isotype:
IgG

Purification Method:
Protein A purification

Clone ID:
242233D7

Reactivity:
human

GenBank:
BC064993

Immunogen Catalog Number:
Ag13375

Conjugate:
Unconjugated

Full name:
B-cell CLL/lymphoma 3

Gene ID:
602

Detection Antibody Information

Catalog Number:
84882-3-PBS

Host:
Rabbit

Isotype:
IgG

Purification Method:
Protein A purification

Clone ID:
242233G12

Reactivity:
human

GenBank:
BC064993

Immunogen Catalog Number:
Ag13375

Conjugate:
Unconjugated

Full name:
B-cell CLL/lymphoma 3

Gene ID:
602

Applications

Tested Applications:
Sandwich ELISA

Range:
78.1-5000 pg/mL (Sandwich ELISA)

Recommended Dilutions:
It is recommended that this reagent should be titrated in each testing system to obtain optimal results.

Product Information

MP01655-3 targets BCL3 in immunoassays as a matched antibody pair. Validated in Sandwich ELISA.

Capture antibody: BCL3 Recombinant antibody, PBS Only (Capture) 84882-4-PBS (242233D7). 100 μ g. Concentration 1 mg/ml.

Detection antibody: BCL3 Recombinant antibody, PBS Only (Capture/Detector) 84882-3-PBS (242233G12). 100 μ g. Concentration 1 mg/ml.

Unconjugated rabbit recombinant monoclonal antibody pair in PBS only storage buffer at a concentration of 1 mg/mL, ready for conjugation. Created using Proteintech's proprietary in-house recombinant technology. Recombinant production enables unrivalled batch-to-batch consistency, easy scale-up, and future security of supply.

Matched antibody pairs are designed for use in a variety of assays and platforms that require matched antibody pairs.

Antibody use should be optimized for each application and assay.

Storage

Storage:

Store at -80°C.

The product is shipped with ice packs. Upon receipt, store it immediately at -80°C

Storage buffer:

PBS only

For technical support and original validation data for this product please contact:

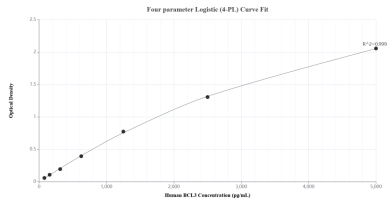
T: 4006900926

E: Proteintech-CN@ptglab.com

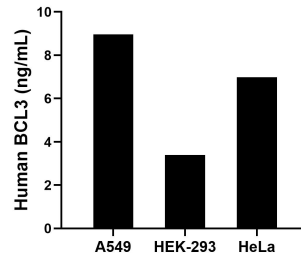
W: ptgcn.com

This product is exclusively available under Proteintech Group brand and is not available to purchase from any other manufacturer.

Selected Validation Data



Sandwich ELISA standard curve of MP01655-3, Human BCL3 Recombinant Matched Antibody Pair - PBS only. 84882-4-PBS was coated to a plate as the capture antibody and incubated with serial dilutions of standard Ag13375. 84882-3-PBS was HRP conjugated as the detection antibody. Range: 78.1-5000 pg/mL.



The mean BCL3 concentration was determined to be 9.0 ng/mL in A549 cell extract based on a 2.3 mg/mL extract load, 3.4 ng/mL in HEK-293 cell extract based on a 2.9 mg/mL extract load and 7.0 ng/mL in HeLa cell extract based on a 1.0 mg/mL extract load.