

For Research Use Only

PLSCR1 Recombinant Matched Antibody Pair, PBS Only



Catalog Number:MP01664-3

Capture Antibody Information

Catalog Number:
84888-1-PBS

Host:
Rabbit

Isotype:
IgG

Purification Method:
Protein A purification

Clone ID:
242372B1

Reactivity:
human

GenBank:
BC021100

Immunogen Catalog Number:
Ag2172

Conjugate:
Unconjugated

Full name:
phospholipid scramblase 1

Gene ID:
5359

Detection Antibody Information

Catalog Number:
84888-5-PBS

Host:
Rabbit

Isotype:
IgG

Purification Method:
Protein A purification

Clone ID:
242372C6

Reactivity:
human

GenBank:
BC021100

Immunogen Catalog Number:
Ag2172

Conjugate:
Unconjugated

Full name:
phospholipid scramblase 1

Gene ID:
5359

Applications

Tested Applications:
Sandwich ELISA

Range:
156.3-5000 pg/mL (Sandwich ELISA)

Recommended Dilutions:
It is recommended that this reagent should be titrated in each testing system to obtain optimal results.

Product Information

MP01664-3 targets PLSCR1 in immunoassays as a matched antibody pair. Validated in Sandwich ELISA.

Capture antibody: PLSCR1 Recombinant antibody, PBS Only (Capture) 84888-1-PBS (242372B1). 100 µg. Concentration 1 mg/ml.

Detection antibody: PLSCR1 Recombinant antibody, PBS Only (Detector) 84888-5-PBS (242372C6). 100 µg. Concentration 1 mg/ml.

Unconjugated rabbit recombinant monoclonal antibody pair in PBS only storage buffer at a concentration of 1 mg/mL, ready for conjugation. Created using Proteintech's proprietary in-house recombinant technology. Recombinant production enables unrivalled batch-to-batch consistency, easy scale-up, and future security of supply.

Matched antibody pairs are designed for use in a variety of assays and platforms that require matched antibody pairs.

Antibody use should be optimized for each application and assay.

Storage

Storage:
Store at -80°C.

The product is shipped with ice packs. Upon receipt, store it immediately at -80°C

Storage buffer:
PBS only

For technical support and original validation data for this product please contact:

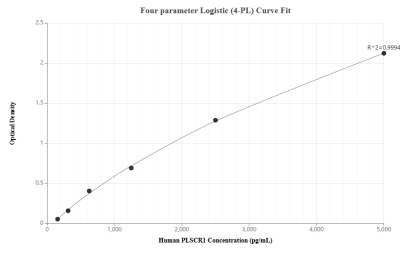
T: 4006900926

E: Proteintech-CN@ptglab.com

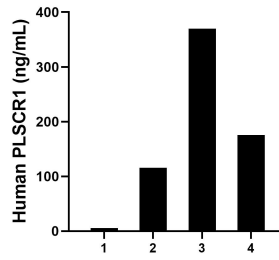
W: ptgcn.com

This product is exclusively available under Proteintech Group brand and is not available to purchase from any other manufacturer.

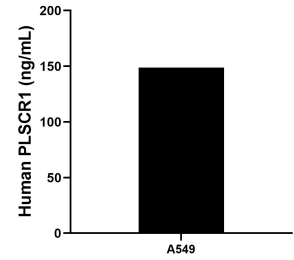
Selected Validation Data



Sandwich ELISA standard curve of MP01664-3, Human PLSCR1 Recombinant Matched Antibody Pair - PBS only. 84888-1-PBS was coated to a plate as the capture antibody and incubated with serial dilutions of standard Ag2172. 84888-5-PBS was HRP conjugated as the detection antibody. Range: 156.3-5000 pg/mL



Urine of four individual healthy human donors was measured. The human PLSCR1 concentration of detected samples was determined to be 166.67 ng/mL with a range of 5.59 - 369.55 ng/mL



The mean PLSCR1 concentration was determined to be 148.88 ng/mL in A549 cell extract based on a 2.0 mg/mL extract load.