

# TEAD4 Recombinant Matched Antibody Pair, PBS Only

Catalog Number:MP01682-3

## Capture Antibody Information

**Catalog Number:**

84932-5-PBS

**Host:**

Rabbit

**Isotype:**

IgG

**Purification Method:**

Protein A purification

**Clone ID:**

242496F4

**Reactivity:**

human

**GenBank:**

BC015497

**Immunogen Catalog Number:**

Ag3059

**Conjugate:**

Unconjugated

**Full name:**

TEA domain family member 4

**Gene ID:**

7004

## Detection Antibody Information

**Catalog Number:**

84932-4-PBS

**Host:**

Rabbit

**Isotype:**

IgG

**Purification Method:**

Protein A purification

**Clone ID:**

242496B2

**Reactivity:**

human

**GenBank:**

BC015497

**Immunogen Catalog Number:**

Ag3059

**Conjugate:**

Unconjugated

**Full name:**

TEA domain family member 4

**Gene ID:**

7004

## Applications

**Tested Applications:**

Sandwich ELISA

**Range:**

0.391-25 ng/mL (Sandwich ELISA)

**Recommended Dilutions:**

It is recommended that this reagent should be titrated in each testing system to obtain optimal results.

## Product Information

MP01682-3 targets TEAD4 in immunoassays as a matched antibody pair. Validated in Sandwich ELISA.

Capture antibody: TEAD4 Recombinant antibody, PBS Only (Capture) 84932-5-PBS (242496F4). 100 µg. Concentration 1 mg/mL.

Detection antibody: TEAD4 Recombinant antibody, PBS Only (Detector) 84932-4-PBS (242496B2). 100 µg. Concentration 1 mg/mL.

Unconjugated rabbit recombinant monoclonal antibody pair in PBS only storage buffer at a concentration of 1 mg/mL, ready for conjugation. Created using Proteintech's proprietary in-house recombinant technology. Recombinant production enables unrivalled batch-to-batch consistency, easy scale-up, and future security of supply.

Matched antibody pairs are designed for use in a variety of assays and platforms that require matched antibody pairs.

Antibody use should be optimized for each application and assay.

## Storage

**Storage:**

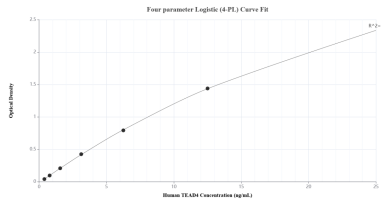
Store at -80°C.

The product is shipped with ice packs. Upon receipt, store it immediately at -80°C

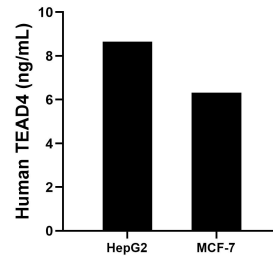
**Storage buffer:**

PBS only

## Selected Validation Data



Sandwich ELISA standard curve of MP01682-3, Human TEAD4 Recombinant Matched Antibody Pair - PBS only. 84932-5-PBS was coated to a plate as the capture antibody and incubated with serial dilutions of standard Ag3059. 84932-4-PBS was HRP conjugated as the detection antibody. Range: 0.391-25 ng/mL



The mean TEAD4 concentration was determined to be 8.65 ng/mL in HepG2 cell extract based on a 1.00 mg/mL extract load and 6.31 ng/mL in MCF-7 cell extract based on a 1.20 mg/mL extract load.