

For Research Use Only

Eg5 Recombinant Matched Antibody Pair, PBS Only



Catalog Number:MP01688-1

Capture Antibody Information

Catalog Number: 84966-3-PBS	Clone ID: 242611D11	Conjugate: Unconjugated
Host: Rabbit	Reactivity: human	Full name: kinesin family member 11
Isotype: IgG	GenBank: BC136474	Gene ID: 3832
Purification Method: Protein A purification	Immunogen Catalog Number: Ag20001	

Detection Antibody Information

Catalog Number: 84966-4-PBS	Clone ID: 242611H8	Conjugate: Unconjugated
Host: Rabbit	Reactivity: human	Full name: kinesin family member 11
Isotype: IgG	GenBank: BC136474	Gene ID: 3832
Purification Method: Protein A purification	Immunogen Catalog Number: Ag20001	

Applications

Tested Applications: Cytometric bead array, Sandwich ELISA	Range: 1.563-100 ng/mL (Cytometric Bead Array) 0.781-50 ng/mL (Sandwich ELISA)	Recommended Dilutions: It is recommended that this reagent should be titrated in each testing system to obtain optimal results.
--	---	---

Product Information

MP01688-1 targets Eg5 in immunoassays as a matched antibody pair. Validated in Cytometric bead array, Sandwich ELISA.

Capture antibody: Eg5 Recombinant antibody, PBS Only (Capture) 84966-3-PBS (242611D11). 100 µg. Concentration 1 mg/mL.

Detection antibody: Eg5 Recombinant antibody, PBS Only (Detector) 84966-4-PBS (242611H8). 100 µg. Concentration 1 mg/mL.

Unconjugated rabbit recombinant monoclonal antibody pair in PBS only storage buffer at a concentration of 1 mg/mL, ready for conjugation. Created using Proteintech's proprietary in-house recombinant technology. Recombinant production enables unrivalled batch-to-batch consistency, easy scale-up, and future security of supply.

Matched antibody pairs are designed for use in a variety of assays and platforms that require matched antibody pairs.

Antibody use should be optimized for each application and assay.

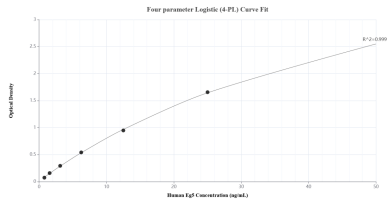
Storage

Storage:
Store at -80°C.
The product is shipped with ice packs. Upon receipt, store it immediately at -80°C
Storage buffer:
PBS only

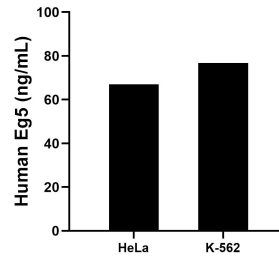
For technical support and original validation data for this product please contact:
T: 4006900926 E: Proteintech-CN@ptglab.com W: ptgcn.com

This product is exclusively available under Proteintech Group brand and is not available to purchase from any other manufacturer.

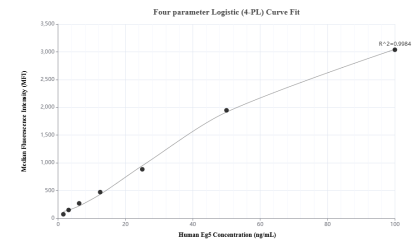
Selected Validation Data



Sandwich ELISA standard curve of MP01688-1, Human Eg5 Recombinant Matched Antibody Pair - PBS only. 84966-3-PBS was coated to a plate as the capture antibody and incubated with serial dilutions of standard Ag20001. 84966-4-PBS was HRP conjugated as the detection antibody. Range: 0.781-50 ng/mL.



The mean Eg5 concentration was determined to be 67.04 ng/mL in HeLa cell extract based on a 1.00 mg/mL extract load and 76.72 ng/mL in K-562 cell extract based on a 2.50 mg/mL extract load.



Cytometric bead array standard curve of MP01688-1, Eg5 Recombinant Matched Antibody Pair, PBS Only. Capture antibody: 84966-3-PBS. Detection antibody: 84966-4-PBS. Standard: Ag20001. Range: 1.563-100 ng/mL.