

For Research Use Only



JUNB Recombinant Matched Antibody Pair, PBS Only

Catalog Number:MP01695-3

Capture Antibody Information

Catalog Number:
84922-3-PBS

Host:
Rabbit

Isotype:
IgG

Purification Method:
Protein A purification

Clone ID:
242562F9

Reactivity:
human

GenBank:
BC004250

Immunogen Catalog Number:
Ag0752

Conjugate:
Unconjugated

Full name:
jun B proto-oncogene

Gene ID:
3726

Detection Antibody Information

Catalog Number:
84922-4-PBS

Host:
Rabbit

Isotype:
IgG

Purification Method:
Protein A purification

Clone ID:
242562E9

Reactivity:
human

GenBank:
BC004250

Immunogen Catalog Number:
Ag0752

Conjugate:
Unconjugated

Full name:
jun B proto-oncogene

Gene ID:
3726

Applications

Tested Applications:
Sandwich ELISA

Range:
39.1-2500 pg/mL (Sandwich ELISA)

Recommended Dilutions:
It is recommended that this reagent should be titrated in each testing system to obtain optimal results.

Product Information

MP01695-3 targets JUNB in immunoassays as a matched antibody pair. Validated in Sandwich ELISA.

Capture antibody: JUNB Recombinant antibody, PBS Only (Capture) 84922-3-PBS (242562F9). 100 µg. Concentration 1 mg/ml.

Detection antibody: JUNB Recombinant antibody, PBS Only (Detector) 84922-4-PBS (242562E9). 100 µg. Concentration 1 mg/ml.

Unconjugated rabbit recombinant monoclonal antibody pair in PBS only storage buffer at a concentration of 1 mg/mL, ready for conjugation. Created using Proteintech's proprietary in-house recombinant technology. Recombinant production enables unrivalled batch-to-batch consistency, easy scale-up, and future security of supply.

Matched antibody pairs are designed for use in a variety of assays and platforms that require matched antibody pairs.

Antibody use should be optimized for each application and assay.

Storage

Storage:
Store at -80°C.

The product is shipped with ice packs. Upon receipt, store it immediately at -80°C

Storage buffer:
PBS only

For technical support and original validation data for this product please contact:

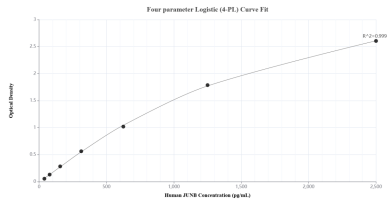
T: 4006900926

E: Proteintech-CN@ptglab.com

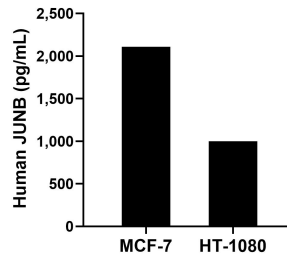
W: ptgcn.com

This product is exclusively available under Proteintech Group brand and is not available to purchase from any other manufacturer.

Selected Validation Data



Sandwich ELISA standard curve of MP01695-3, Human JUNB Recombinant Matched Antibody Pair - PBS only. 84922-3-PBS was coated to a plate as the capture antibody and incubated with serial dilutions of standard Ag0752. 84922-4-PBS was HRP conjugated as the detection antibody. Range: 39.1-2500 pg/mL



The mean JUNB concentration was determined to be 2,110.1 pg/mL in MCF-7 cell extract based on a 1.2 mg/mL extract load and 998.0 ng/mL in HT-1080 cell extract based on a 1.4 mg/mL extract load.