

# Cystatin A Recombinant Matched Antibody Pair, PBS Only

Catalog Number:MP01707-1

## Capture Antibody Information

<b>Catalog Number:</b> 84953-1-PBS	<b>Clone ID:</b> 242558E1	<b>Conjugate:</b> Unconjugated
<b>Host:</b> Rabbit	<b>Reactivity:</b> human	<b>Full name:</b> cystatin A (stefin A)
<b>Isotype:</b> IgG	<b>GenBank:</b> BC010379	<b>Gene ID:</b> 1475
<b>Purification Method:</b> Protein A purification	<b>Immunogen Catalog Number:</b> Ag8733	

## Detection Antibody Information

<b>Catalog Number:</b> 84953-2-PBS	<b>Clone ID:</b> 242558G3	<b>Conjugate:</b> Unconjugated
<b>Host:</b> Rabbit	<b>Reactivity:</b> human	<b>Full name:</b> cystatin A (stefin A)
<b>Isotype:</b> IgG	<b>GenBank:</b> BC010379	<b>Gene ID:</b> 1475
<b>Purification Method:</b> Protein A purification	<b>Immunogen Catalog Number:</b> Ag8733	

## Applications

<b>Tested Applications:</b> Cytometric bead array, Sandwich ELISA	<b>Range:</b> 0.469-60 ng/mL (Cytometric Bead Array) 39.1-2500 pg/mL (Sandwich ELISA)	<b>Recommended Dilutions:</b> It is recommended that this reagent should be titrated in each testing system to obtain optimal results.
--	---	---

## Product Information

MP01707-1 targets Cystatin A in immunoassays as a matched antibody pair. Validated in Cytometric bead array, Sandwich ELISA.

Capture antibody: CSTA Recombinant antibody, PBS Only (Capture/Detector) 84953-1-PBS (242558E1). 100 µg. Concentration 1 mg/ml.

Detection antibody: CSTA Recombinant antibody, PBS Only (Detector) 84953-2-PBS (242558G3). 100 µg. Concentration 1 mg/ml.

Unconjugated rabbit recombinant monoclonal antibody pair in PBS only storage buffer at a concentration of 1 mg/mL, ready for conjugation. Created using Proteintech's proprietary in-house recombinant technology. Recombinant production enables unrivalled batch-to-batch consistency, easy scale-up, and future security of supply.

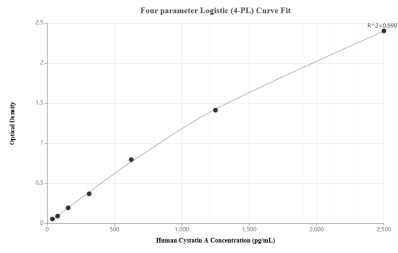
Matched antibody pairs are designed for use in a variety of assays and platforms that require matched antibody pairs.

Antibody use should be optimized for each application and assay.

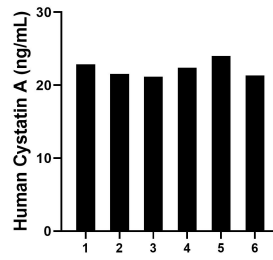
## Storage

**Storage:**  
Store at -80°C.  
**The product is shipped with ice packs. Upon receipt, store it immediately at -80°C**  
**Storage buffer:**  
PBS only

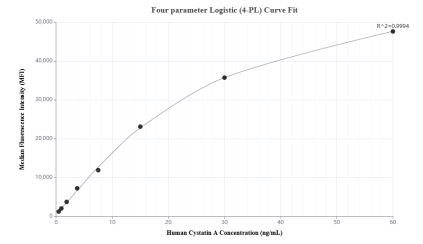
## Selected Validation Data



Sandwich ELISA standard curve of MP01707-1, Human Cystatin A Recombinant Matched Antibody Pair - PBS only. 84953-1-PBS was coated to a plate as the capture antibody and incubated with serial dilutions of standard Ag8733. 84953-2-PBS was HRP conjugated as the detection antibody. Range: 39.1-2500 pg/mL



Saliva of six individual healthy human donors was measured. The human Cystatin A concentration of detected samples was determined to be 22.22 ng/mL with a range of 21.18 - 24.01 ng/mL



Cytometric bead array standard curve of MP01707-1, Cystatin A Recombinant Matched Antibody Pair, PBS Only. Capture antibody: 84953-1-PBS. Detection antibody: 84953-2-PBS. Standard: Ag8733. Range: 0.469-60 ng/mL