

For Research Use Only

SSBP1 Recombinant Matched Antibody Pair, PBS Only



Catalog Number:MP01710-3

Capture Antibody Information

Catalog Number:
84939-4-PBS
Host:
Rabbit
Isotype:
IgG
Purification Method:
Protein A purification

Clone ID:
242519C10
Reactivity:
human
GenBank:
BC000895
Immunogen Catalog Number:
Ag2860

Conjugate:
Unconjugated
Full name:
single-stranded DNA binding protein 1
Gene ID:
6742

Detection Antibody Information

Catalog Number:
84939-5-PBS
Host:
Rabbit
Isotype:
IgG
Purification Method:
Protein A purification

Clone ID:
242519F10
Reactivity:
human
GenBank:
BC000895
Immunogen Catalog Number:
Ag2860

Conjugate:
Unconjugated
Full name:
single-stranded DNA binding protein 1
Gene ID:
6742

Applications

Tested Applications:
Sandwich ELISA

Range:
0.625-40 ng/mL (Sandwich ELISA)

Recommended Dilutions:
It is recommended that this reagent should be titrated in each testing system to obtain optimal results.

Product Information

MP01710-3 targets SSBP1 in immunoassays as a matched antibody pair. Validated in Sandwich ELISA.

Capture antibody: SSBP1 Recombinant antibody, PBS Only (Capture) 84939-4-PBS (242519C10). 100 µg. Concentration 1 mg/ml.

Detection antibody: SSBP1 Recombinant antibody, PBS Only (Detector) 84939-5-PBS (242519F10). 100 µg. Concentration 1 mg/ml.

Unconjugated rabbit recombinant monoclonal antibody pair in PBS only storage buffer at a concentration of 1 mg/mL, ready for conjugation. Created using Proteintech's proprietary in-house recombinant technology. Recombinant production enables unrivalled batch-to-batch consistency, easy scale-up, and future security of supply.

Matched antibody pairs are designed for use in a variety of assays and platforms that require matched antibody pairs.

Antibody use should be optimized for each application and assay.

Storage

Storage:
Store at -80°C.
The product is shipped with ice packs. Upon receipt, store it immediately at -80°C
Storage buffer:
PBS only

For technical support and original validation data for this product please contact:

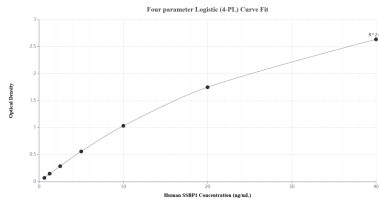
T: 4006900926

E: Proteintech-CN@ptglab.com

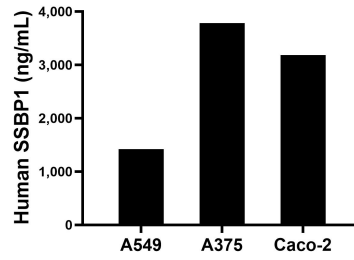
W: ptgcn.com

This product is exclusively available under Proteintech Group brand and is not available to purchase from any other manufacturer.

Selected Validation Data



Sandwich ELISA standard curve of MP01710-3, Human SSBP1 Recombinant Matched Antibody Pair - PBS only. 84939-4-PBS was coated to a plate as the capture antibody and incubated with serial dilutions of standard Ag2860. 84939-5-PBS was HRP conjugated as the detection antibody. Range: 0.625-40 ng/mL



The mean SSBP1 concentration was determined to be 1,417.48 ng/mL in A549 cell extract based on a 1.50 mg/mL extract load, 3,782.71 ng/mL in A375 cell extract based on a 1.60 mg/mL extract load and 3,185.11 ng/mL in Caco-2 cell extract based on a 2.70 mg/mL extract load.