

For Research Use Only

PTH Recombinant Matched Antibody Pair, PBS Only



Catalog Number:MP01717-3

Capture Antibody Information

Catalog Number:
84960-4-PBS

Host:
Rabbit

Isotype:
IgG

Purification Method:
Protein A purification

Clone ID:
242608F8

Reactivity:
human

GenBank:
NM_000315.4

Conjugate:
Unconjugated

Full name:
parathyroid hormone

Gene ID:
5741

Detection Antibody Information

Catalog Number:
84960-3-PBS

Host:
Rabbit

Isotype:
IgG

Purification Method:
Protein A purification

Clone ID:
242608F7

Reactivity:
human

GenBank:
NM_000315.4

Conjugate:
Unconjugated

Full name:
parathyroid hormone

Gene ID:
5741

Applications

Tested Applications:
Sandwich ELISA

Range:
9.77-625 pg/mL (Sandwich ELISA)

Recommended Dilutions:
It is recommended that this reagent should be titrated in each testing system to obtain optimal results.

Product Information

MP01717-3 targets PTH in immunoassays as a matched antibody pair. Validated in Sandwich ELISA.

Capture antibody: PTH Recombinant antibody, PBS Only (Capture) 84960-4-PBS (242608F8). 100 μ g. Concentration 1 mg/ml.

Detection antibody: PTH Recombinant antibody, PBS Only (Detector) 84960-3-PBS (242608F7). 100 μ g. Concentration 1 mg/ml.

Unconjugated rabbit recombinant monoclonal antibody pair in PBS only storage buffer at a concentration of 1 mg/mL, ready for conjugation. Created using Proteintech's proprietary in-house recombinant technology. Recombinant production enables unrivalled batch-to-batch consistency, easy scale-up, and future security of supply.

Matched antibody pairs are designed for use in a variety of assays and platforms that require matched antibody pairs.

Antibody use should be optimized for each application and assay.

Storage

Storage:

Store at -80°C.

The product is shipped with ice packs. Upon receipt, store it immediately at -80°C

Storage buffer:

PBS only

For technical support and original validation data for this product please contact:

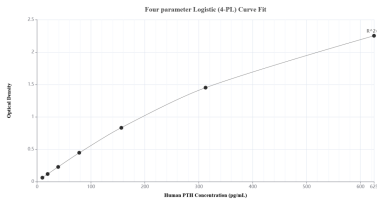
T: 4006900926

E: Proteintech-CN@ptglab.com

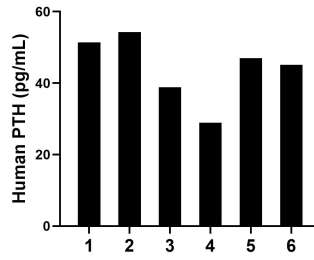
W: ptgcn.com

This product is exclusively available under Proteintech Group brand and is not available to purchase from any other manufacturer.

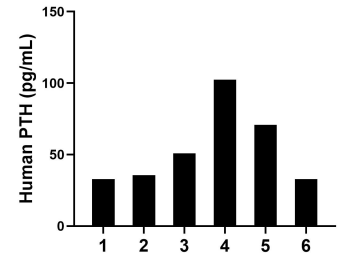
Selected Validation Data



Sandwich ELISA standard curve of MP01717-3, Human PTH Recombinant Matched Antibody Pair - PBS only. 84960-4-PBS was coated to a plate as the capture antibody and incubated with serial dilutions of standard Eg3191. 84960-3-PBS was HRP conjugated as the detection antibody. Range: 9.77-625 pg/mL



Serum of six individual healthy human donors was measured. The PTH concentration of detected samples was determined to be 44.3 pg/mL with a range of 28.9-54.3 pg/mL.



Plasma of six individual healthy human donors was measured. The PTH concentration of detected samples was determined to be 54.2 ng/mL with a range of 32.7-102.4 pg/mL.