

For Research Use Only

ALR Recombinant Matched Antibody Pair, PBS Only



Catalog Number:MP01721-2

Capture Antibody Information

Catalog Number:
84972-1-PBS
Host:
Rabbit
Isotype:
IgG
Purification Method:
Protein A purification

Clone ID:
242557E2
Reactivity:
human
GenBank:
BC028348
Immunogen Catalog Number:
Ag1840

Conjugate:
Unconjugated
Full name:
growth factor, augments of liver regeneration
Gene ID:
2671

Detection Antibody Information

Catalog Number:
84972-2-PBS
Host:
Rabbit
Isotype:
IgG
Purification Method:
Protein A purification

Clone ID:
242557F7
Reactivity:
human
GenBank:
BC028348
Immunogen Catalog Number:
Ag1840

Conjugate:
Unconjugated
Full name:
growth factor, augments of liver regeneration
Gene ID:
2671

Applications

Tested Applications:
Cytometric bead array

Range:
0.156-20 ng/mL (Cytometric Bead Array)

Recommended Dilutions:
It is recommended that this reagent should be titrated in each testing system to obtain optimal results.

Product Information

MP01721-2 targets ALR in immunoassays as a matched antibody pair. Validated in Cytometric bead array.

Capture antibody: GFER Recombinant antibody, PBS Only (Capture) 84972-1-PBS (242557E2). 100 µg. Concentration 1 mg/ml.

Detection antibody: GFER Recombinant antibody, PBS Only (Detector) 84972-2-PBS (242557F7). 100 µg. Concentration 1 mg/ml.

Unconjugated rabbit recombinant monoclonal antibody pair in PBS only storage buffer at a concentration of 1 mg/mL, ready for conjugation. Created using Proteintech's proprietary in-house recombinant technology. Recombinant production enables unrivalled batch-to-batch consistency, easy scale-up, and future security of supply.

Matched antibody pairs are designed for use in a variety of assays and platforms that require matched antibody pairs.

Antibody use should be optimized for each application and assay.

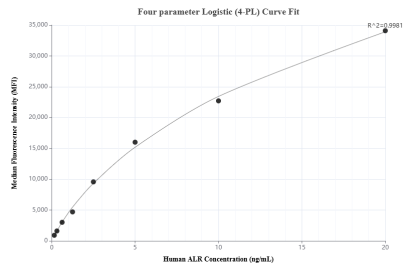
Storage

Storage:
Store at -80°C.
The product is shipped with ice packs. Upon receipt, store it immediately at -80°C
Storage buffer:
PBS only

For technical support and original validation data for this product please contact:
T: 4006900926 E: Proteintech-CN@ptglab.com W: ptgcn.com

This product is exclusively available under Proteintech Group brand and is not available to purchase from any other manufacturer.

Selected Validation Data



Cytometric bead array standard curve of MP01721-2, ALR Recombinant Matched Antibody Pair, PBS Only. Capture antibody: 84972-1-PBS. Detection antibody: 84972-2-PBS. Standard: Ag1840. Range: 0.156-20 ng/mL