

For Research Use Only

Bacteriophage T7 T7 RNA polymerase Recombinant Matched Antibody Pair, PBS Only



Catalog Number:MP01722-2

Capture Antibody Information

Catalog Number: 84959-1-PBS	Clone ID: 242544A5	Conjugate: Unconjugated
Host: Rabbit	Reactivity: bacteriophage t7	Full name: T7 RNA polymerase
Isotype: IgG	GenBank: NP_041960	Gene ID: 1261050
Purification Method: Protein A purification	Immunogen Catalog Number: Ag32001	

Detection Antibody Information

Catalog Number: 84959-3-PBS	Clone ID: 242544G7	Conjugate: Unconjugated
Host: Rabbit	Reactivity: bacteriophage t7	Full name: T7 RNA polymerase
Isotype: IgG	GenBank: NP_041960	Gene ID: 1261050
Purification Method: Protein A purification	Immunogen Catalog Number: Ag32001	

Applications

Tested Applications: Cytometric bead array, Sandwich ELISA	Range: 0.781-100 ng/mL (Cytometric Bead Array) 0.195-12.5 ng/mL (Sandwich ELISA)	Recommended Dilutions: It is recommended that this reagent should be titrated in each testing system to obtain optimal results.
--	---	---

Product Information

MP01722-2 targets T7 RNA polymerase in immunoassays as a matched antibody pair. Validated in Cytometric bead array, Sandwich ELISA.

Capture antibody: Bacteriophage t7 T7 RNA polymerase Recombinant antibody, PBS Only (Capture) 84959-1-PBS (242544A5). 100 µg. Concentration 1 mg/ml.

Detection antibody: Bacteriophage t7 T7 RNA polymerase Recombinant antibody, PBS Only (Detector) 84959-3-PBS (242544G7). 100 µg. Concentration 1 mg/ml.

Unconjugated rabbit recombinant monoclonal antibody pair in PBS only storage buffer at a concentration of 1 mg/mL, ready for conjugation. Created using Proteintech's proprietary in-house recombinant technology. Recombinant production enables unrivalled batch-to-batch consistency, easy scale-up, and future security of supply.

Matched antibody pairs are designed for use in a variety of assays and platforms that require matched antibody pairs.

Antibody use should be optimized for each application and assay.

Storage

Storage:
Store at -80°C.
The product is shipped with ice packs. Upon receipt, store it immediately at -80°C
Storage buffer:
PBS only

For technical support and original validation data for this product please contact:

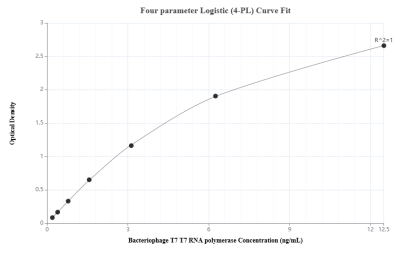
T: 4006900926

E: Proteintech-CN@ptglab.com

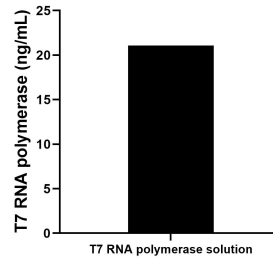
W: ptgcn.com

This product is exclusively available under Proteintech Group brand and is not available to purchase from any other manufacturer.

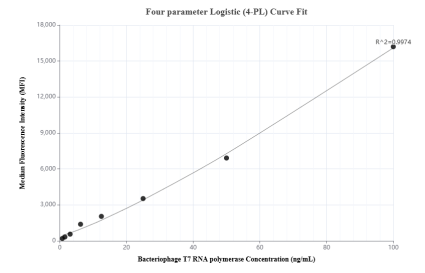
Selected Validation Data



Sandwich ELISA standard curve of MP01722-2, Bacteriophage T7 T7 RNA polymerase Recombinant Matched Antibody Pair - PBS only. 84959-1-PBS was coated to a plate as the capture antibody and incubated with serial dilutions of standard Ag32001. 84959-3-PBS was HRP conjugated as the detection antibody. Range: 0.195-12.5 ng/mL



The mean T7 RNA polymerase concentration was determined to be 21.07 ng/mL in T7 RNA polymerase solution (CW/3393) bought from CW BIO.



Cytometric bead array standard curve of MP01722-2, BACTERIOPHAGE T7 T7 RNA polymerase Recombinant Matched Antibody Pair, PBS Only. Capture antibody: 84959-1-PBS. Detection antibody: 84959-3-PBS. Standard: Ag32001. Range: 0.781-100 ng/mL