

# PPP1CB Recombinant Matched Antibody Pair, PBS Only

Catalog Number: **MP01723-2**

## Capture Antibody Information

**Catalog Number:**  
84938-3-PBS

**Host:**  
Rabbit

**Isotype:**  
IgG

**Purification Method:**  
Protein A purification

**Clone ID:**  
242547D5

**Reactivity:**  
human

**GenBank:**  
BC002697

**Immunogen Catalog Number:**  
Ag0183

**Conjugate:**  
Unconjugated

**Full name:**  
protein phosphatase 1, catalytic subunit, beta isoform

**Gene ID:**  
5500

## Detection Antibody Information

**Catalog Number:**  
84938-2-PBS

**Host:**  
Rabbit

**Isotype:**  
IgG

**Purification Method:**  
Protein A purification

**Clone ID:**  
242547C6

**Reactivity:**  
human

**GenBank:**  
BC002697

**Immunogen Catalog Number:**  
Ag0183

**Conjugate:**  
Unconjugated

**Full name:**  
protein phosphatase 1, catalytic subunit, beta isoform

**Gene ID:**  
5500

## Applications

**Tested Applications:**  
Cytometric bead array, Sandwich ELISA

**Range:**  
1.56-100 ng/mL (Cytometric Bead Array)  
7.81-500 ng/mL (Sandwich ELISA)

**Recommended Dilutions:**  
It is recommended that this reagent should be titrated in each testing system to obtain optimal results.

## Product Information

MP01723-2 targets PPP1CB in immunoassays as a matched antibody pair. Validated in Cytometric bead array, Sandwich ELISA.

Capture antibody: PPP1CB Recombinant antibody, PBS Only (Capture) 84938-3-PBS (242547D5). 100 µg. Concentration 1 mg/mL.

Detection antibody: PPP1CB Recombinant antibody, PBS Only (Detector) 84938-2-PBS (242547C6). 100 µg. Concentration 1 mg/mL.

Unconjugated rabbit recombinant monoclonal antibody pair in PBS only storage buffer at a concentration of 1 mg/mL, ready for conjugation. Created using Proteintech's proprietary in-house recombinant technology. Recombinant production enables unrivalled batch-to-batch consistency, easy scale-up, and future security of supply.

Matched antibody pairs are designed for use in a variety of assays and platforms that require matched antibody pairs.

Antibody use should be optimized for each application and assay.

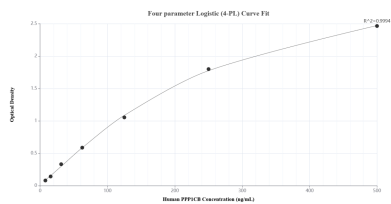
## Storage

**Storage:**  
Store at -80°C.

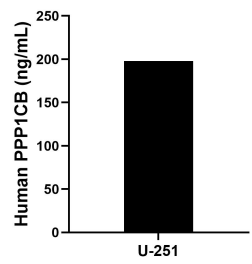
**The product is shipped with ice packs. Upon receipt, store it immediately at -80°C**

**Storage buffer:**  
PBS only

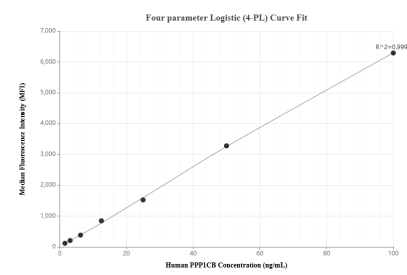
## Selected Validation Data



Sandwich ELISA standard curve of MP01723-2, Human PPP1CB Recombinant Matched Antibody Pair - PBS only. 84938-3-PBS was coated to a plate as the capture antibody and incubated with serial dilutions of standard Ag0183. 84938-2-PBS was HRP conjugated as the detection antibody. Range: 7.81-500 ng/mL



The mean PPP1CB concentration was determined to be 197.98 ng/mL in U-251 cell extract based on a 1.60 mg/mL extract load.



Cytometric bead array standard curve of MP01723-2, PPP1CB Recombinant Matched Antibody Pair, PBS Only. Capture antibody: 84938-3-PBS. Detection antibody: 84938-2-PBS. Standard: Ag0183. Range: 1.56-100 ng/mL