

# TRPA1 Recombinant Matched Antibody Pair, PBS Only

Catalog Number:MP01728-1

## Capture Antibody Information

Catalog Number:  
84986-1-PBS

Host:  
Rabbit

Isotype:  
IgG

Purification Method:  
Protein A purification

Clone ID:  
242162A2

Reactivity:  
human

GenBank:  
NM\_007332

Conjugate:  
Unconjugated

Full name:  
transient receptor potential cation channel, subfamily A, member 1

Gene ID:  
8989

## Detection Antibody Information

Catalog Number:  
84986-2-PBS

Host:  
Rabbit

Isotype:  
IgG

Purification Method:  
Protein A purification

Clone ID:  
242162D11

Reactivity:  
human

GenBank:  
NM\_007332

Conjugate:  
Unconjugated

Full name:  
transient receptor potential cation channel, subfamily A, member 1

Gene ID:  
8989

## Applications

Tested Applications:  
Sandwich ELISA

Range:  
0.312-20 ng/mL (Sandwich ELISA)

Recommended Dilutions:  
It is recommended that this reagent should be titrated in each testing system to obtain optimal results.

## Product Information

MP01728-1 targets TRPA1 in immunoassays as a matched antibody pair. Validated in Sandwich ELISA.

Capture antibody: TRPA1 Recombinant antibody, PBS Only (Capture) 84986-1-PBS (242162A2). 100 µg. Concentration 1 mg/ml.

Detection antibody: TRPA1 Recombinant antibody, PBS Only (Detector) 84986-2-PBS (242162D11). 100 µg. Concentration 1 mg/ml.

Unconjugated rabbit recombinant monoclonal antibody pair in PBS only storage buffer at a concentration of 1 mg/mL, ready for conjugation. Created using Proteintech's proprietary in-house recombinant technology. Recombinant production enables unrivalled batch-to-batch consistency, easy scale-up, and future security of supply.

Matched antibody pairs are designed for use in a variety of assays and platforms that require matched antibody pairs.

Antibody use should be optimized for each application and assay.

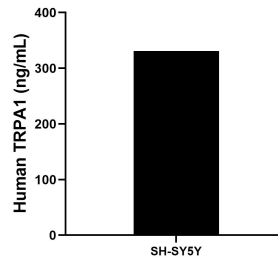
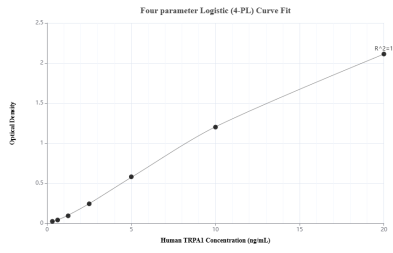
## Storage

Storage:  
Store at -80°C.

The product is shipped with ice packs. Upon receipt, store it immediately at -80°C

Storage buffer:  
PBS only

## Selected Validation Data



Sandwich ELISA standard curve of MP01728-1, Human TRPA1 Recombinant Matched Antibody Pair - PBS only. 84986-1-PBS was coated to a plate as the capture antibody and incubated with serial dilutions of standard SY00327. 84986-2-PBS was HRP conjugated as the detection antibody. Range: 0.312-20 ng/mL

The mean TRPA1 concentration was determined to be 331.00 ng/mL in SH-SY5Y cell extract based on a 1.0 mg/mL extract load.