

DCBLD2 Recombinant Matched Antibody Pair, PBS Only

Catalog Number:MP01733-1

Capture Antibody Information

Catalog Number:
85000-3-PBS
Host:
Rabbit
Isotype:
IgG
Purification Method:
Protein A purification

Clone ID:
242604F9
Reactivity:
human
GenBank:
BC029658
Immunogen Catalog Number:
Ag32823

Conjugate:
Unconjugated
Full name:
discoidin, CUB and LCCL domain containing 2
Gene ID:
131566

Detection Antibody Information

Catalog Number:
85000-2-PBS
Host:
Rabbit
Isotype:
IgG
Purification Method:
Protein A purification

Clone ID:
242604F5
Reactivity:
human
GenBank:
BC029658
Immunogen Catalog Number:
Ag32823

Conjugate:
Unconjugated
Full name:
discoidin, CUB and LCCL domain containing 2
Gene ID:
131566

Applications

Tested Applications:
Cytometric bead array, Sandwich ELISA

Range:
0.469-15 ng/mL (Cytometric Bead Array)
97.7-6250 pg/mL (Sandwich ELISA)

Recommended Dilutions:
It is recommended that this reagent should be titrated in each testing system to obtain optimal results.

Product Information

MP01733-1 targets DCBLD2 in immunoassays as a matched antibody pair. Validated in Cytometric bead array, Sandwich ELISA.

Capture antibody: DCBLD2 Recombinant antibody, PBS Only (Capture) 85000-3-PBS (242604F9). 100 µg. Concentration 1 mg/mL.

Detection antibody: DCBLD2 Recombinant antibody, PBS Only (Detector) 85000-2-PBS (242604F5). 100 µg. Concentration 1 mg/mL.

Unconjugated rabbit recombinant monoclonal antibody pair in PBS only storage buffer at a concentration of 1 mg/mL, ready for conjugation. Created using Proteintech's proprietary in-house recombinant technology. Recombinant production enables unrivalled batch-to-batch consistency, easy scale-up, and future security of supply.

Matched antibody pairs are designed for use in a variety of assays and platforms that require matched antibody pairs.

Antibody use should be optimized for each application and assay.

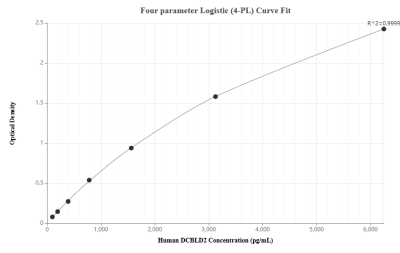
Storage

Storage:
Store at -80°C.

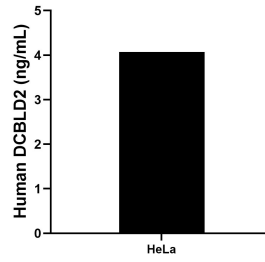
The product is shipped with ice packs. Upon receipt, store it immediately at -80°C

Storage buffer:
PBS only

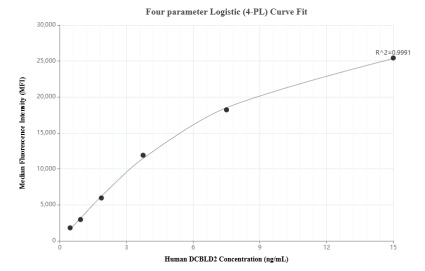
Selected Validation Data



Sandwich ELISA standard curve of MP01733-1, Human DCBLD2 Recombinant Matched Antibody Pair - PBS only. 85000-3-PBS was coated to a plate as the capture antibody and incubated with serial dilutions of standard Ag32823. 85000-2-PBS was HRP conjugated as the detection antibody. Range: 97.7-6250 pg/mL



The mean DCBLD2 concentration was determined to be 4.07 ng/mL in HeLa cell extract based on a 1.5 mg/mL extract load.



Cytometric bead array standard curve of MP01733-1, DCBLD2 Recombinant Matched Antibody Pair, PBS Only. Capture antibody: 85000-3-PBS. Detection antibody: 85000-2-PBS. Standard: Ag32823. Range: 0.469-15 ng/mL