

TBC1D5 Recombinant Matched Antibody Pair, PBS Only

Catalog Number:MP01735-2

Capture Antibody Information

Catalog Number:
84990-2-PBS
Host:
Rabbit
Isotype:
IgG
Purification Method:
Protein A purification

Clone ID:
242534G10
Reactivity:
human
GenBank:
BC013145
Immunogen Catalog Number:
Ag10991

Conjugate:
Unconjugated
Full name:
TBC1 domain family, member 5
Gene ID:
9779

Detection Antibody Information

Catalog Number:
84990-1-PBS
Host:
Rabbit
Isotype:
IgG
Purification Method:
Protein A purification

Clone ID:
242534B1
Reactivity:
human
GenBank:
BC013145
Immunogen Catalog Number:
Ag10991

Conjugate:
Unconjugated
Full name:
TBC1 domain family, member 5
Gene ID:
9779

Applications

Tested Applications:
Cytometric bead array, Sandwich ELISA

Range:
0.313-40 ng/mL (Cytometric Bead Array)
0.156-10 ng/mL (Sandwich ELISA)

Recommended Dilutions:
It is recommended that this reagent should be titrated in each testing system to obtain optimal results.

Product Information

MP01735-2 targets TBC1D5 in immunoassays as a matched antibody pair. Validated in Cytometric bead array, Sandwich ELISA.

Capture antibody: TBC1D5 Recombinant antibody, PBS Only (Capture) 84990-2-PBS (242534G10). 100 µg. Concentration 1 mg/mL.

Detection antibody: TBC1D5 Recombinant antibody, PBS Only (Detector) 84990-1-PBS (242534B1). 100 µg. Concentration 1 mg/mL.

Unconjugated rabbit recombinant monoclonal antibody pair in PBS only storage buffer at a concentration of 1 mg/mL, ready for conjugation. Created using Proteintech's proprietary in-house recombinant technology. Recombinant production enables unrivalled batch-to-batch consistency, easy scale-up, and future security of supply.

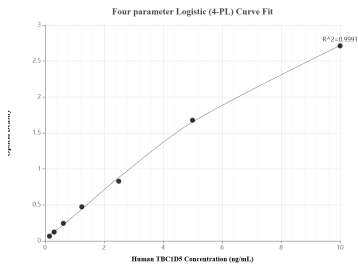
Matched antibody pairs are designed for use in a variety of assays and platforms that require matched antibody pairs.

Antibody use should be optimized for each application and assay.

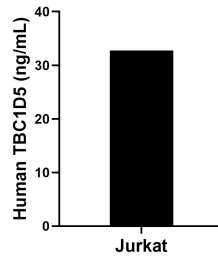
Storage

Storage:
Store at -80°C.
The product is shipped with ice packs. Upon receipt, store it immediately at -80°C
Storage buffer:
PBS only

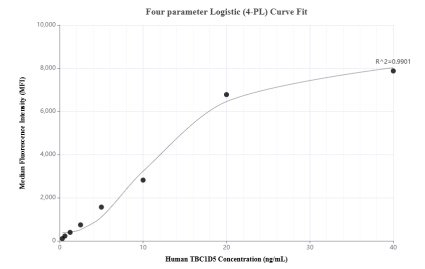
Selected Validation Data



Sandwich ELISA standard curve of MP01735-2, Human TBC1D5 Recombinant Matched Antibody Pair - PBS only. 84990-2-PBS was coated to a plate as the capture antibody and incubated with serial dilutions of standard Ag10991. 84990-1-PBS was HRP conjugated as the detection antibody. Range: 0.156-10 ng/mL



The mean TBC1D5 concentration was determined to be 32.73 ng/mL in Jurkat cell extract based on a 2.00 mg/mL extract load.



Cytometric bead array standard curve of MP01735-2, TBC1D5 Recombinant Matched Antibody Pair, PBS Only. Capture antibody: 84990-2-PBS. Detection antibody: 84990-1-PBS. Standard: Ag10991. Range: 0.313-40 ng/mL