

RAF1 Recombinant Matched Antibody Pair, PBS Only

Catalog Number:MP01739-1

Capture Antibody Information

Catalog Number:
84994-3-PBS
Host:
Rabbit
Isotype:
IgG
Purification Method:
Protein A purification

Clone ID:
242540A7
Reactivity:
human
GenBank:
BC018119
Immunogen Catalog Number:
Ag25423

Conjugate:
Unconjugated
Full name:
v-raf-1 murine leukemia viral oncogene homolog 1
Gene ID:
5894

Detection Antibody Information

Catalog Number:
84994-2-PBS
Host:
Rabbit
Isotype:
IgG
Purification Method:
Protein A purification

Clone ID:
242540A6
Reactivity:
human
GenBank:
BC018119
Immunogen Catalog Number:
Ag25423

Conjugate:
Unconjugated
Full name:
v-raf-1 murine leukemia viral oncogene homolog 1
Gene ID:
5894

Applications

Tested Applications:
Cytometric bead array, Sandwich ELISA

Range:
0.313-40 ng/mL (Cytometric Bead Array)
39.1-2500 pg/mL (Sandwich ELISA)

Recommended Dilutions:
It is recommended that this reagent should be titrated in each testing system to obtain optimal results.

Product Information

MP01739-1 targets RAF1 in immunoassays as a matched antibody pair. Validated in Cytometric bead array, Sandwich ELISA.

Capture antibody: RAF1 Recombinant antibody, PBS Only (Capture) 84994-3-PBS (242540A7). 100 µg. Concentration 1 mg/mL.

Detection antibody: RAF1 Recombinant antibody, PBS Only (Capture/Detector) 84994-2-PBS (242540A6). 100 µg. Concentration 1 mg/mL.

Unconjugated rabbit recombinant monoclonal antibody pair in PBS only storage buffer at a concentration of 1 mg/mL, ready for conjugation. Created using Proteintech's proprietary in-house recombinant technology. Recombinant production enables unrivalled batch-to-batch consistency, easy scale-up, and future security of supply.

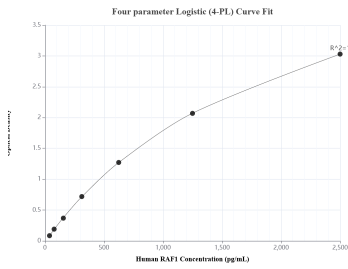
Matched antibody pairs are designed for use in a variety of assays and platforms that require matched antibody pairs.

Antibody use should be optimized for each application and assay.

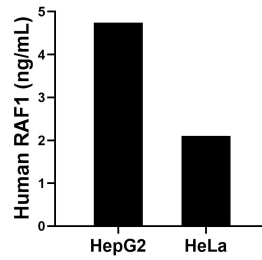
Storage

Storage:
Store at -80°C.
The product is shipped with ice packs. Upon receipt, store it immediately at -80°C
Storage buffer:
PBS only

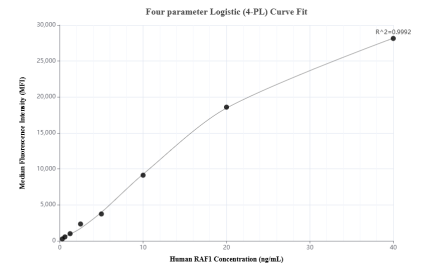
Selected Validation Data



Sandwich ELISA standard curve of MP01739-1, Human RAF1 Recombinant Matched Antibody Pair - PBS only. 84994-3-PBS was coated to a plate as the capture antibody and incubated with serial dilutions of standard Ag25423. 84994-2-PBS was HRP conjugated as the detection antibody. Range: 39.1-2500 pg/mL



The mean RAF1 concentration was determined to be 4.7 ng/mL in HepG2 cell extract based on a 1.0 mg/mL extract load and 2.1 ng/mL in HeLa cell extract based on a 1.5 mg/mL extract load.



Cytometric bead array standard curve of MP01739-1, RAF1 Recombinant Matched Antibody Pair, PBS Only. Capture antibody: 84994-3-PBS. Detection antibody: 84994-2-PBS. Standard: Ag25423. Range: 0.313-40 ng/mL