

For Research Use Only

# EGFR Recombinant Matched Antibody Pair, PBS Only



Catalog Number:MP01744-3

## Capture Antibody Information

**Catalog Number:**  
85039-1-PBS  
**Host:**  
Rabbit  
**Isotype:**  
IgG  
**Purification Method:**  
Protein A purification

**Clone ID:**  
242684E4  
**Reactivity:**  
human  
**GenBank:**  
NM\_005228.5

**Conjugate:**  
Unconjugated  
**Full name:**  
epidermal growth factor receptor (erythroblastic leukemia viral (v-erb-b) oncogene homolog, avian)  
**Gene ID:**  
1956

## Detection Antibody Information

**Catalog Number:**  
85039-3-PBS  
**Host:**  
Rabbit  
**Isotype:**  
IgG  
**Purification Method:**  
Protein A purification

**Clone ID:**  
242684F3  
**Reactivity:**  
human  
**GenBank:**  
NM\_005228.5

**Conjugate:**  
Unconjugated  
**Full name:**  
epidermal growth factor receptor (erythroblastic leukemia viral (v-erb-b) oncogene homolog, avian)  
**Gene ID:**  
1956

## Applications

**Tested Applications:**  
Sandwich ELISA

**Range:**  
0.313-20 ng/mL (Sandwich ELISA)

**Recommended Dilutions:**  
It is recommended that this reagent should be titrated in each testing system to obtain optimal results.

## Product Information

MP01744-3 targets EGFR in immunoassays as a matched antibody pair. Validated in Sandwich ELISA.

Capture antibody: EGFR Recombinant antibody, PBS Only (Capture/Detector) 85039-1-PBS (242684E4). 100 µg. Concentration 1 mg/mL.

Detection antibody: EGFR Recombinant antibody, PBS Only (Capture/Detector) 85039-3-PBS (242684F3). 100 µg. Concentration 1 mg/mL.

Unconjugated rabbit recombinant monoclonal antibody pair in PBS only storage buffer at a concentration of 1 mg/mL, ready for conjugation. Created using Proteintech's proprietary in-house recombinant technology. Recombinant production enables unrivalled batch-to-batch consistency, easy scale-up, and future security of supply.

Matched antibody pairs are designed for use in a variety of assays and platforms that require matched antibody pairs.

Antibody use should be optimized for each application and assay.

## Storage

**Storage:**  
Store at -80°C.  
**The product is shipped with ice packs. Upon receipt, store it immediately at -80°C**  
**Storage buffer:**  
PBS only

For technical support and original validation data for this product please contact:

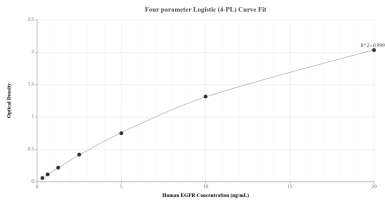
T: 4006900926

E: Proteintech-CN@ptglab.com

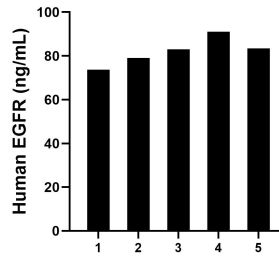
W: ptgcn.com

**This product is exclusively available under Proteintech Group brand and is not available to purchase from any other manufacturer.**

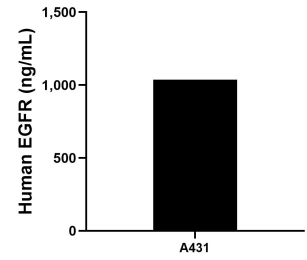
## Selected Validation Data



Sandwich ELISA standard curve of MP01744-3, Human EGFR Recombinant Matched Antibody Pair - PBS only. 85039-1-PBS was coated to a plate as the capture antibody and incubated with serial dilutions of standard Eg0204. 85039-3-PBS was HRP conjugated as the detection antibody. Range: 0.313-20 ng/mL



Serum of five individual healthy human donors was measured. The EGFR concentration of detected samples was determined to be 82.02 ng/mL with a range of 73.67-90.99 ng/mL.



A431 cells were cultured in DMEM supplemented with 10% fetal bovine serum, 2.5 mM L-glutamine, 100 U/mL penicillin, and 100  $\mu$ g/mL streptomycin sulfate. An aliquot of the cell culture supernate was removed, assayed for human EGFR, and measured 1,036.46 ng/mL.