

For Research Use Only

NME1 Recombinant Matched Antibody Pair, PBS Only



Catalog Number:MP01750-3

Capture Antibody Information

Catalog Number:
85038-2-PBS
Host:
Rabbit
Isotype:
IgG
Purification Method:
Protein A purification

Clone ID:
242670C7
Reactivity:
human
GenBank:
BC018994
Immunogen Catalog Number:
Ag1548

Conjugate:
Unconjugated
Full name:
non-metastatic cells 1, protein (NM23A) expressed in
Gene ID:
4830

Detection Antibody Information

Catalog Number:
85038-4-PBS
Host:
Rabbit
Isotype:
IgG
Purification Method:
Protein A purification

Clone ID:
242670B7
Reactivity:
human
GenBank:
BC018994
Immunogen Catalog Number:
Ag1548

Conjugate:
Unconjugated
Full name:
non-metastatic cells 1, protein (NM23A) expressed in
Gene ID:
4830

Applications

Tested Applications:
Sandwich ELISA

Range:
3.13-200 ng/mL (Sandwich ELISA)

Recommended Dilutions:
It is recommended that this reagent should be titrated in each testing system to obtain optimal results.

Product Information

MP01750-3 targets NME1 in immunoassays as a matched antibody pair. Validated in Sandwich ELISA.

Capture antibody: NME1 Recombinant antibody, PBS Only (Capture/Detector) 85038-2-PBS (242670C7). 100 µg. Concentration 1 mg/mL.

Detection antibody: NME1 Recombinant antibody, PBS Only (Detector) 85038-4-PBS (242670B7). 100 µg. Concentration 1 mg/mL.

Unconjugated rabbit recombinant monoclonal antibody pair in PBS only storage buffer at a concentration of 1 mg/mL, ready for conjugation. Created using Proteintech's proprietary in-house recombinant technology. Recombinant production enables unrivalled batch-to-batch consistency, easy scale-up, and future security of supply.

Matched antibody pairs are designed for use in a variety of assays and platforms that require matched antibody pairs.

Antibody use should be optimized for each application and assay.

Storage

Storage:
Store at -80°C.
The product is shipped with ice packs. Upon receipt, store it immediately at -80°C
Storage buffer:
PBS only

For technical support and original validation data for this product please contact:

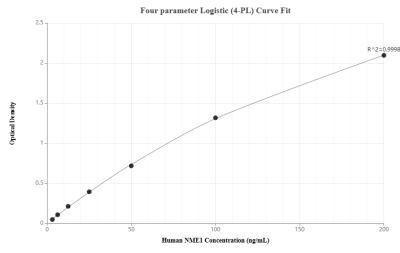
T: 4006900926

E: Proteintech-CN@ptglab.com

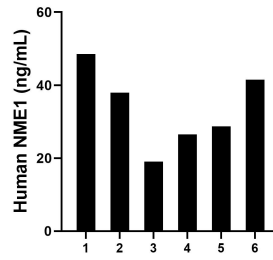
W: ptgcn.com

This product is exclusively available under Proteintech Group brand and is not available to purchase from any other manufacturer.

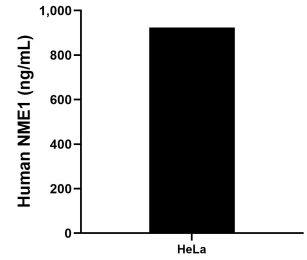
Selected Validation Data



Sandwich ELISA standard curve of MP01750-3, Human NME1 Recombinant Matched Antibody Pair - PBS only. 85038-2-PBS was coated to a plate as the capture antibody and incubated with serial dilutions of standard Ag1548. 85038-4-PBS was HRP conjugated as the detection antibody. Range: 3.13-200 ng/mL



Serum of six individual healthy human donors was measured. The human NME1 concentration of detected samples was determined to be 33.71 ng/mL with a range of 19.03 - 48.55 ng/mL



The mean NME1 concentration was determined to be 924.43 ng/mL in HeLa cell extract based on a 1.5 mg/mL extract load.