

For Research Use Only

# SMARCA2 Recombinant Matched Antibody Pair, PBS Only



Catalog Number:MP01752-3

## Capture Antibody Information

Catalog Number:  
85018-3-PBS

Host:  
Rabbit

Isotype:  
IgG

Purification Method:  
Protein A purification

Clone ID:  
242511H8

Reactivity:  
human

GenBank:  
NM\_003070

Immunogen Catalog Number:  
Ag25157

Conjugate:  
Unconjugated

Full name:  
SWI/SNF related, matrix associated, actin dependent regulator of chromatin, subfamily a, member 2

Gene ID:  
6595

## Detection Antibody Information

Catalog Number:  
85018-1-PBS

Host:  
Rabbit

Isotype:  
IgG

Purification Method:  
Protein A purification

Clone ID:  
242511C7

Reactivity:  
human

GenBank:  
NM\_003070

Immunogen Catalog Number:  
Ag25157

Conjugate:  
Unconjugated

Full name:  
SWI/SNF related, matrix associated, actin dependent regulator of chromatin, subfamily a, member 2

Gene ID:  
6595

## Applications

Tested Applications:  
Sandwich ELISA

Range:  
31.3-2000 pg/mL (Sandwich ELISA)

Recommended Dilutions:  
It is recommended that this reagent should be titrated in each testing system to obtain optimal results.

## Product Information

MP01752-3 targets SMARCA2 in immunoassays as a matched antibody pair. Validated in Sandwich ELISA.

Capture antibody: SMARCA2-Specific Recombinant antibody, PBS Only (Capture/Detector) 85018-3-PBS (242511H8). 100 µg. Concentration 1 mg/mL.

Detection antibody: SMARCA2-Specific Recombinant antibody, PBS Only (Capture/Detector) 85018-1-PBS (242511C7). 100 µg. Concentration 1 mg/mL.

Unconjugated rabbit recombinant monoclonal antibody pair in PBS only storage buffer at a concentration of 1 mg/mL, ready for conjugation. Created using Proteintech's proprietary in-house recombinant technology. Recombinant production enables unrivalled batch-to-batch consistency, easy scale-up, and future security of supply.

Matched antibody pairs are designed for use in a variety of assays and platforms that require matched antibody pairs.

Antibody use should be optimized for each application and assay.

## Storage

Storage:  
Store at -80°C.

The product is shipped with ice packs. Upon receipt, store it immediately at -80°C

Storage buffer:  
PBS only

For technical support and original validation data for this product please contact:

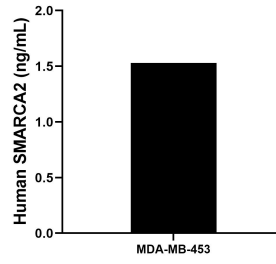
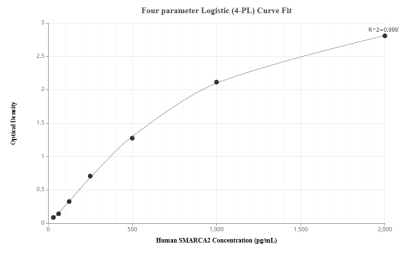
T: 4006900926

E: Proteintech-CN@ptglab.com

W: ptgcn.com

This product is exclusively available under Proteintech Group brand and is not available to purchase from any other manufacturer.

## Selected Validation Data



Sandwich ELISA standard curve of MP01752-3, Human SMARCA2 Recombinant Matched Antibody Pair - PBS only. 85018-3-PBS was coated to a plate as the capture antibody and incubated with serial dilutions of standard Ag25157. 85018-1-PBS was HRP conjugated as the detection antibody. Range: 31.3-2000 pg/mL

The mean SMARCA2 concentration was determined to be 1.53 ng/mL in MDA-MB-453 cell extract based on a 1.5 mg/mL extract load.