

For Research Use Only

# RPS4X Recombinant Matched Antibody Pair, PBS Only



Catalog Number:MP01754-3

## Capture Antibody Information

Catalog Number:  
85040-4-PBS

Host:  
Rabbit

Isotype:  
IgG

Purification Method:  
Protein A purification

Clone ID:  
242697H7

Reactivity:  
human

GenBank:  
BC000472

Immunogen Catalog Number:  
Ag6513

Conjugate:  
Unconjugated

Full name:  
ribosomal protein S4, X-linked

Gene ID:  
6191

## Detection Antibody Information

Catalog Number:  
85040-2-PBS

Host:  
Rabbit

Isotype:  
IgG

Purification Method:  
Protein A purification

Clone ID:  
242697F1

Reactivity:  
human

GenBank:  
BC000472

Immunogen Catalog Number:  
Ag6513

Conjugate:  
Unconjugated

Full name:  
ribosomal protein S4, X-linked

Gene ID:  
6191

## Applications

Tested Applications:  
Sandwich ELISA

Range:  
0.391-25 ng/mL (Sandwich ELISA)

Recommended Dilutions:  
It is recommended that this reagent should be titrated in each testing system to obtain optimal results.

## Product Information

MP01754-3 targets RPS4X in immunoassays as a matched antibody pair. Validated in Sandwich ELISA.

Capture antibody: SCAR Recombinant antibody, PBS Only (Capture) 85040-4-PBS (242697H7). 100 µg. Concentration 1 mg/mL.

Detection antibody: SCAR Recombinant antibody, PBS Only (Detector) 85040-2-PBS (242697F1). 100 µg. Concentration 1 mg/mL.

Unconjugated rabbit recombinant monoclonal antibody pair in PBS only storage buffer at a concentration of 1 mg/mL, ready for conjugation. Created using Proteintech's proprietary in-house recombinant technology. Recombinant production enables unrivalled batch-to-batch consistency, easy scale-up, and future security of supply.

Matched antibody pairs are designed for use in a variety of assays and platforms that require matched antibody pairs.

Antibody use should be optimized for each application and assay.

## Storage

Storage:  
Store at -80°C.

The product is shipped with ice packs. Upon receipt, store it immediately at -80°C

Storage buffer:  
PBS only

For technical support and original validation data for this product please contact:

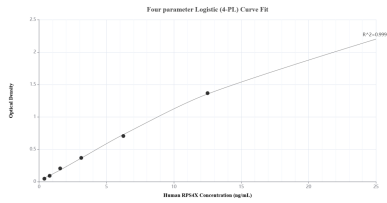
T: 4006900926

E: Proteintech-CN@ptglab.com

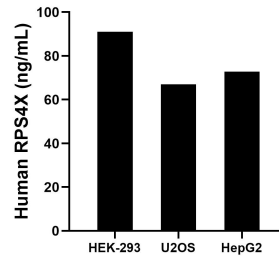
W: ptgcn.com

This product is exclusively available under Proteintech Group brand and is not available to purchase from any other manufacturer.

## Selected Validation Data



Sandwich ELISA standard curve of MP01754-3, Human RPS4X Recombinant Matched Antibody Pair - PBS only. 85040-4-PBS was coated to a plate as the capture antibody and incubated with serial dilutions of standard Ag6513. 85040-2-PBS was HRP conjugated as the detection antibody. Range: 0.391-25 ng/mL



The mean RPS4X concentration was determined to be 91.01 ng/mL in HEK-293 cell extract based on a 2.70 mg/mL extract load, 66.99 ng/mL in U2OS cell extract based on a 1.40 mg/mL extract load and 72.80 ng/mL in HepG2 cell extract based on a 2.30 mg/mL extract load.