

For Research Use Only

Complement C2 Recombinant Matched Antibody Pair, PBS Only



Catalog Number: MP01780-3

Capture Antibody Information

Catalog Number:
85088-2-PBS

Host:
Rabbit

Isotype:
IgG

Purification Method:
Protein A purification

Clone ID:
242739F4

Reactivity:
human

GenBank:
NM_000063.6

Conjugate:
Unconjugated

Full name:
complement component 2

Gene ID:
717

Detection Antibody Information

Catalog Number:
85088-3-PBS

Host:
Rabbit

Isotype:
IgG

Purification Method:
Protein A purification

Clone ID:
242739H7

Reactivity:
human

GenBank:
NM_000063.6

Conjugate:
Unconjugated

Full name:
complement component 2

Gene ID:
717

Applications

Tested Applications:
Sandwich ELISA

Range:
0.391-25 ng/mL (Sandwich ELISA)

Recommended Dilutions:
It is recommended that this reagent should be titrated in each testing system to obtain optimal results.

Product Information

MP01780-3 targets Complement C2 in immunoassays as a matched antibody pair. Validated in Sandwich ELISA.

Capture antibody: C2 Recombinant antibody, PBS Only (Capture/Detector) 85088-2-PBS (242739F4). 100 μ g. Concentration 1 mg/mL.

Detection antibody: C2 Recombinant antibody, PBS Only (Capture/Detector) 85088-3-PBS (242739H7). 100 μ g. Concentration 1 mg/mL.

Unconjugated rabbit recombinant monoclonal antibody pair in PBS only storage buffer at a concentration of 1 mg/mL, ready for conjugation. Created using Proteintech's proprietary in-house recombinant technology. Recombinant production enables unrivalled batch-to-batch consistency, easy scale-up, and future security of supply.

Matched antibody pairs are designed for use in a variety of assays and platforms that require matched antibody pairs.

Antibody use should be optimized for each application and assay.

Storage

Storage:

Store at -80°C.

The product is shipped with ice packs. Upon receipt, store it immediately at -80°C

Storage buffer:

PBS only

For technical support and original validation data for this product please contact:

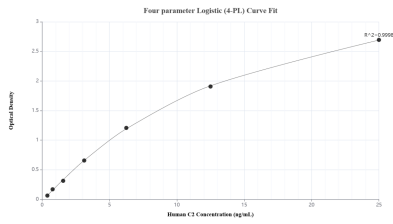
T: 4006900926

E: Proteintech-CN@ptglab.com

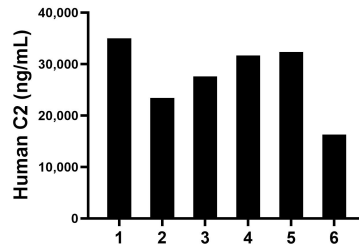
W: ptgcn.com

This product is exclusively available under Proteintech Group brand and is not available to purchase from any other manufacturer.

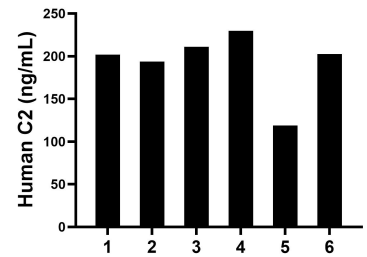
Selected Validation Data



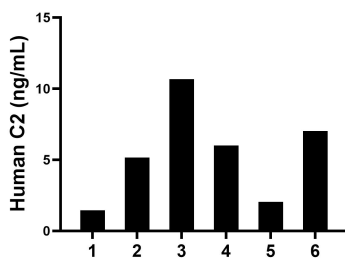
Sandwich ELISA standard curve of MP01780-3, Human C2 Recombinant Matched Antibody Pair - PBS only. 85088-2-PBS was coated to a plate as the capture antibody and incubated with serial dilutions of standard Eg3058. 85088-3-PBS was HRP conjugated as the detection antibody. Range: 0.391-25 ng/mL



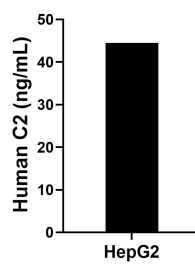
Serum of six individual healthy human donors was measured. The C2 concentration of detected samples was determined to be 27,730.87 ng/mL with a range of 16,308.58-35,021.63 ng/mL



Human milk of six individual healthy human donors was measured. The C2 concentration of detected samples was determined to be 192.92 ng/mL with a range of 118.70-229.78 ng/mL



Saliva of six individual healthy human donors was measured. The C2 concentration of detected samples was determined to be 5.39 ng/mL with a range of 1.44-10.68 ng/mL



HepG2 were cultured in DMEM supplemented with 10% fetal bovine serum, 2.5 mM L-glutamine, 100 U/mL penicillin, and 100 μ g/mL streptomycin sulfate. An aliquot of the cell culture supernate was removed, assayed for human C2, and measured 44.51 ng/mL