

ROD1 Recombinant Matched Antibody Pair, PBS Only

Catalog Number:MP01782-2

Capture Antibody Information

Catalog Number:
85061-1-PBS
Host:
Rabbit
Isotype:
IgG
Purification Method:
Protein A purification

Clone ID:
242641A6
Reactivity:
human
GenBank:
BC044585
Immunogen Catalog Number:
Ag5172

Conjugate:
Unconjugated
Full name:
ROD1 regulator of differentiation 1 (S. pombe)
Gene ID:
9991

Detection Antibody Information

Catalog Number:
85061-2-PBS
Host:
Rabbit
Isotype:
IgG
Purification Method:
Protein A purification

Clone ID:
242641C4
Reactivity:
human
GenBank:
BC044585
Immunogen Catalog Number:
Ag5172

Conjugate:
Unconjugated
Full name:
ROD1 regulator of differentiation 1 (S. pombe)
Gene ID:
9991

Applications

Tested Applications:
Cytometric bead array, Sandwich ELISA

Range:
1.563-100 ng/mL (Cytometric Bead Array)
1.56-50 ng/mL (Sandwich ELISA)

Recommended Dilutions:
It is recommended that this reagent should be titrated in each testing system to obtain optimal results.

Product Information

MP01782-2 targets ROD1 in immunoassays as a matched antibody pair. Validated in Cytometric bead array, Sandwich ELISA.

Capture antibody: ROD1 Recombinant antibody, PBS Only (Capture) 85061-1-PBS (242641A6). 100 µg. Concentration 1 mg/mL.

Detection antibody: ROD1 Recombinant antibody, PBS Only (Detector) 85061-2-PBS (242641C4). 100 µg. Concentration 1 mg/mL.

Unconjugated rabbit recombinant monoclonal antibody pair in PBS only storage buffer at a concentration of 1 mg/mL, ready for conjugation. Created using Proteintech's proprietary in-house recombinant technology. Recombinant production enables unrivalled batch-to-batch consistency, easy scale-up, and future security of supply.

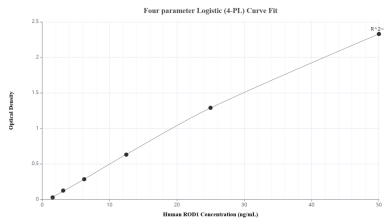
Matched antibody pairs are designed for use in a variety of assays and platforms that require matched antibody pairs.

Antibody use should be optimized for each application and assay.

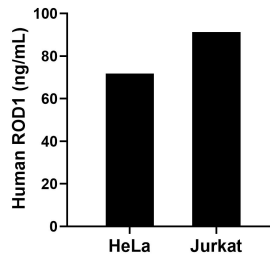
Storage

Storage:
Store at -80°C.
The product is shipped with ice packs. Upon receipt, store it immediately at -80°C
Storage buffer:
PBS only

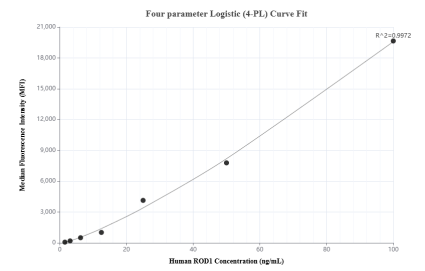
Selected Validation Data



Sandwich ELISA standard curve of MP01782-2, Human ROD1 Recombinant Matched Antibody Pair - PBS only. 85061-1-PBS was coated to a plate as the capture antibody and incubated with serial dilutions of standard Ag5172. 85061-2-PBS was HRP conjugated as the detection antibody. Range: 1.56-50 ng/mL.



The mean ROD1 concentration was determined to be 71.78 ng/mL in HeLa cell extract based on a 1.50 mg/mL extract load and 91.18 ng/mL in Jurkat cell extract based on a 2.00 mg/mL extract load.



Cytometric bead array standard curve of MP01782-2, ROD1 Recombinant Matched Antibody Pair, PBS Only. Capture antibody: 85061-1-PBS. Detection antibody: 85061-2-PBS. Standard: Ag5172. Range: 1.563-100 ng/mL.