

For Research Use Only

RGS12 Recombinant Matched Antibody Pair, PBS Only



Catalog Number:MP01790-2

Capture Antibody Information

Catalog Number:
85057-3-PBS
Host:
Rabbit
Isotype:
IgG
Purification Method:
Protein A purification

Clone ID:
242530G4
Reactivity:
human
GenBank:
NM_198229
Immunogen Catalog Number:
Ag30731

Conjugate:
Unconjugated
Full name:
regulator of G-protein signaling 12
Gene ID:
6002

Detection Antibody Information

Catalog Number:
85057-2-PBS
Host:
Rabbit
Isotype:
IgG
Purification Method:
Protein A purification

Clone ID:
242530G11
Reactivity:
human
GenBank:
NM_198229
Immunogen Catalog Number:
Ag30731

Conjugate:
Unconjugated
Full name:
regulator of G-protein signaling 12
Gene ID:
6002

Applications

Tested Applications:
Cytometric bead array, Sandwich ELISA

Range:
0.625-40 ng/mL (Cytometric Bead Array)
39.1-2500 pg/mL (Sandwich ELISA)

Recommended Dilutions:
It is recommended that this reagent should be titrated in each testing system to obtain optimal results.

Product Information

MP01790-2 targets RGS12 in immunoassays as a matched antibody pair. Validated in Cytometric bead array, Sandwich ELISA.

Capture antibody: RGS12 Recombinant antibody, PBS Only (Capture) 85057-3-PBS (242530G4). 100 µg. Concentration 1 mg/mL.

Detection antibody: RGS12 Recombinant antibody, PBS Only (Detector) 85057-2-PBS (242530G11). 100 µg. Concentration 1 mg/mL.

Unconjugated rabbit recombinant monoclonal antibody pair in PBS only storage buffer at a concentration of 1 mg/mL, ready for conjugation. Created using Proteintech's proprietary in-house recombinant technology. Recombinant production enables unrivalled batch-to-batch consistency, easy scale-up, and future security of supply.

Matched antibody pairs are designed for use in a variety of assays and platforms that require matched antibody pairs.

Antibody use should be optimized for each application and assay.

Storage

Storage:
Store at -80°C.

The product is shipped with ice packs. Upon receipt, store it immediately at -80°C

Storage buffer:
PBS only

For technical support and original validation data for this product please contact:

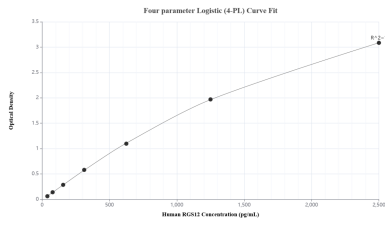
T: 4006900926

E: Proteintech-CN@ptglab.com

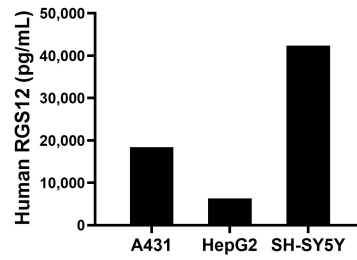
W: ptgcn.com

This product is exclusively available under Proteintech Group brand and is not available to purchase from any other manufacturer.

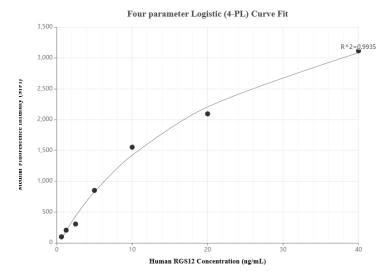
Selected Validation Data



Sandwich ELISA standard curve of MP01790-2, Human RGS12 Recombinant Matched Antibody Pair - PBS only. 85057-3-PBS was coated to a plate as the capture antibody and incubated with serial dilutions of standard Ag30731. 85057-2-PBS was HRP conjugated as the detection antibody. Range: 39.1-2500 pg/mL



The mean RGS12 concentration was determined to be 18,450.2 pg/mL in A431 cell extract based on a 1.3 mg/mL extract load, 6,327.2 pg/mL in HepG2 cell extract based on a 1.0 mg/mL extract load and 42,390.5 pg/mL in SH-SY5Y cell extract based on a 3.2 mg/mL extract load.



Cytometric bead array standard curve of MP01790-2, RGS12 Recombinant Matched Antibody Pair, PBS Only. Capture antibody: 85057-3-PBS. Detection antibody: 85057-2-PBS. Standard: Ag30731. Range: 0.625-40 ng/mL