

IRF7 Recombinant Matched Antibody Pair, PBS Only

Catalog Number:MP01791-2

Capture Antibody Information

Catalog Number:
85072-2-PBS
Host:
Rabbit
Isotype:
IgG
Purification Method:
Protein A purification

Clone ID:
242613F8
Reactivity:
human
GenBank:
BC136555
Immunogen Catalog Number:
Ag18059

Conjugate:
Unconjugated
Full name:
IRF 7
Gene ID:
3665

Detection Antibody Information

Catalog Number:
85072-3-PBS
Host:
Rabbit
Isotype:
IgG
Purification Method:
Protein A purification

Clone ID:
242613G11
Reactivity:
human
GenBank:
BC136555
Immunogen Catalog Number:
Ag18059

Conjugate:
Unconjugated
Full name:
IRF 7
Gene ID:
3665

Applications

Tested Applications:
Cytometric bead array, Sandwich ELISA

Range:
0.625-80 ng/mL (Cytometric Bead Array)
0.156-10 ng/mL (Sandwich ELISA)

Recommended Dilutions:
It is recommended that this reagent should be titrated in each testing system to obtain optimal results.

Product Information

MP01791-2 targets IRF7 in immunoassays as a matched antibody pair. Validated in Cytometric bead array, Sandwich ELISA.

Capture antibody: IRF7 Recombinant antibody, PBS Only (Capture) 85072-2-PBS (242613F8). 100 µg. Concentration 1 mg/mL.

Detection antibody: IRF7 Recombinant antibody, PBS Only (Detector) 85072-3-PBS (242613G11). 100 µg. Concentration 1 mg/mL.

Unconjugated rabbit recombinant monoclonal antibody pair in PBS only storage buffer at a concentration of 1 mg/mL, ready for conjugation. Created using Proteintech's proprietary in-house recombinant technology. Recombinant production enables unrivalled batch-to-batch consistency, easy scale-up, and future security of supply.

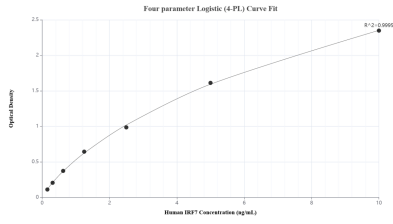
Matched antibody pairs are designed for use in a variety of assays and platforms that require matched antibody pairs.

Antibody use should be optimized for each application and assay.

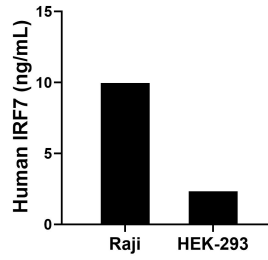
Storage

Storage:
Store at -80°C.
The product is shipped with ice packs. Upon receipt, store it immediately at -80°C
Storage buffer:
PBS only

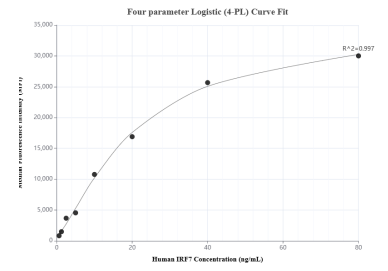
Selected Validation Data



Sandwich ELISA standard curve of MP01791-2, Human IRF7 Recombinant Matched Antibody Pair - PBS only. 85072-2-PBS was coated to a plate as the capture antibody and incubated with serial dilutions of standard Ag18059. 85072-3-PBS was HRP conjugated as the detection antibody. Range: 0.156-10 ng/mL



The mean IRF7 concentration was determined to be 9.97 ng/mL in Raji cell extract based on a 3.00 mg/mL extract load and 2.32 ng/mL in HEK-293 cell extract based on a 2.70 mg/mL extract load.



Cytometric bead array standard curve of MP01791-2, IRF7 Recombinant Matched Antibody Pair, PBS Only. Capture antibody: 85072-2-PBS. Detection antibody: 85072-3-PBS. Standard: Ag18059. Range: 0.625-80 ng/mL