

For Research Use Only

# SP3 Recombinant Matched Antibody Pair, PBS Only



Catalog Number:MP01797-3

## Capture Antibody Information

Catalog Number:  
85050-2-PBS

Host:  
Rabbit

Isotype:  
IgG

Purification Method:  
Protein A purification

Clone ID:  
242556C7

Reactivity:  
human

GenBank:  
BC126414

Immunogen Catalog Number:  
Ag25082

Conjugate:  
Unconjugated

Full name:  
Sp3 transcription factor

Gene ID:  
6670

## Detection Antibody Information

Catalog Number:  
85050-4-PBS

Host:  
Rabbit

Isotype:  
IgG

Purification Method:  
Protein A purification

Clone ID:  
242556A3

Reactivity:  
human

GenBank:  
BC126414

Immunogen Catalog Number:  
Ag25082

Conjugate:  
Unconjugated

Full name:  
Sp3 transcription factor

Gene ID:  
6670

## Applications

Tested Applications:  
Sandwich ELISA

Range:  
0.313-20 ng/mL (Sandwich ELISA)

Recommended Dilutions:  
It is recommended that this reagent should be titrated in each testing system to obtain optimal results.

## Product Information

MP01797-3 targets SP3 in immunoassays as a matched antibody pair. Validated in Sandwich ELISA.

Capture antibody: SP3 Recombinant antibody, PBS Only (Capture) 85050-2-PBS (242556C7). 100  $\mu$ g. Concentration 1 mg/mL.

Detection antibody: SP3 Recombinant antibody, PBS Only (Detector) 85050-4-PBS (242556A3). 100  $\mu$ g. Concentration 1 mg/mL.

Unconjugated rabbit recombinant monoclonal antibody pair in PBS only storage buffer at a concentration of 1 mg/mL, ready for conjugation. Created using Proteintech's proprietary in-house recombinant technology. Recombinant production enables unrivalled batch-to-batch consistency, easy scale-up, and future security of supply.

Matched antibody pairs are designed for use in a variety of assays and platforms that require matched antibody pairs.

Antibody use should be optimized for each application and assay.

## Storage

Storage:  
Store at -80°C.

The product is shipped with ice packs. Upon receipt, store it immediately at -80°C

Storage buffer:  
PBS only

For technical support and original validation data for this product please contact:

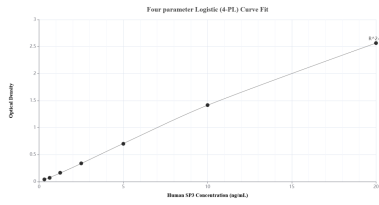
T: 4006900926

E: Proteintech-CN@ptglab.com

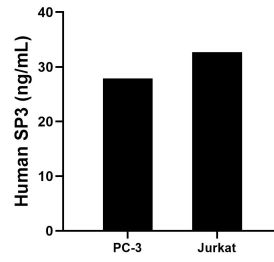
W: ptgcn.com

This product is exclusively available under Proteintech Group brand and is not available to purchase from any other manufacturer.

## Selected Validation Data



Sandwich ELISA standard curve of MP01797-3, Human SP3 Recombinant Matched Antibody Pair - PBS only. 85050-2-PBS was coated to a plate as the capture antibody and incubated with serial dilutions of standard Ag25082. 85050-4-PBS was HRP conjugated as the detection antibody. Range: 0.313-20 ng/mL.



The mean SP3 concentration was determined to be 27.89 ng/mL in PC-3 cell extract based on a 2.50 mg/mL extract load and 32.69 ng/mL in Jurkat cell extract based on a 2.00 mg/mL extract load.