

For Research Use Only

# DDX46 Recombinant Matched Antibody Pair, PBS Only



Catalog Number:MP01807-1

## Capture Antibody Information

**Catalog Number:**  
85065-3-PBS  
**Host:**  
Rabbit  
**Isotype:**  
IgG  
**Purification Method:**  
Protein A purification

**Clone ID:**  
242715E10  
**Reactivity:**  
human  
**GenBank:**  
BC012304  
**Immunogen Catalog Number:**  
Ag10342

**Conjugate:**  
Unconjugated  
**Full name:**  
DEAD (Asp-Glu-Ala-Asp) box polypeptide 46  
**Gene ID:**  
9879

## Detection Antibody Information

**Catalog Number:**  
85065-1-PBS  
**Host:**  
Rabbit  
**Isotype:**  
IgG  
**Purification Method:**  
Protein A purification

**Clone ID:**  
242715C2  
**Reactivity:**  
human  
**GenBank:**  
BC012304  
**Immunogen Catalog Number:**  
Ag10342

**Conjugate:**  
Unconjugated  
**Full name:**  
DEAD (Asp-Glu-Ala-Asp) box polypeptide 46  
**Gene ID:**  
9879

## Applications

**Tested Applications:**  
Cytometric bead array, Sandwich ELISA

**Range:**  
0.781-100 ng/mL (Cytometric Bead Array)  
0.391-25 ng/mL (Sandwich ELISA)

**Recommended Dilutions:**  
It is recommended that this reagent should be titrated in each testing system to obtain optimal results.

## Product Information

MP01807-1 targets DDX46 in immunoassays as a matched antibody pair. Validated in Cytometric bead array, Sandwich ELISA.

Capture antibody: DDX46 Recombinant antibody, PBS Only (Capture) 85065-3-PBS (242715E10). 100 µg. Concentration 1 mg/mL.

Detection antibody: DDX46 Recombinant antibody, PBS Only (Detector) 85065-1-PBS (242715C2). 100 µg. Concentration 1 mg/mL.

Unconjugated rabbit recombinant monoclonal antibody pair in PBS only storage buffer at a concentration of 1 mg/mL, ready for conjugation. Created using Proteintech's proprietary in-house recombinant technology. Recombinant production enables unrivalled batch-to-batch consistency, easy scale-up, and future security of supply.

Matched antibody pairs are designed for use in a variety of assays and platforms that require matched antibody pairs.

Antibody use should be optimized for each application and assay.

## Storage

**Storage:**  
Store at -80°C.

**The product is shipped with ice packs. Upon receipt, store it immediately at -80°C**

**Storage buffer:**  
PBS only

For technical support and original validation data for this product please contact:

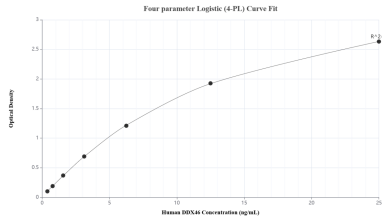
T: 4006900926

E: Proteintech-CN@ptglab.com

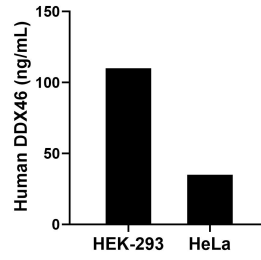
W: ptgcn.com

**This product is exclusively available under Proteintech Group brand and is not available to purchase from any other manufacturer.**

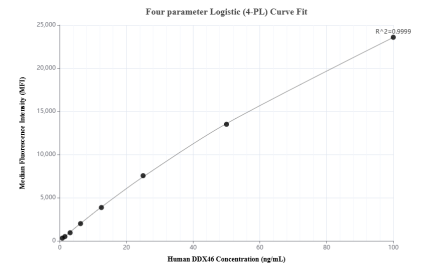
## Selected Validation Data



Sandwich ELISA standard curve of MP01807-1, Human DDX46 Recombinant Matched Antibody Pair - PBS only. 85065-3-PBS was coated to a plate as the capture antibody and incubated with serial dilutions of standard Ag10342. 85065-1-PBS was HRP conjugated as the detection antibody. Range: 0.391-25 ng/mL



The mean DDX46 concentration was determined to be 109.98 ng/mL in HEK-293 cell extract based on a 2.70 mg/mL extract load and 35.02 ng/mL in HeLa cell extract based on a 1.50 mg/mL extract load.



Cytometric bead array standard curve of MP01807-1, DDX46 Recombinant Matched Antibody Pair, PBS Only. Capture antibody: 85065-3-PBS. Detection antibody: 85065-1-PBS. Standard: Ag10342. Range: 0.781-100 ng/mL