

For Research Use Only

# CD27 Recombinant Matched Antibody Pair, PBS Only



Catalog Number:MP01811-3

## Capture Antibody Information

**Catalog Number:**  
85066-3-PBS

**Host:**  
Rabbit

**Isotype:**  
IgG

**Purification Method:**  
Protein A purification

**Clone ID:**  
242731G8

**Reactivity:**  
human

**GenBank:**  
BC012160

**Conjugate:**  
Unconjugated

**Full name:**  
CD27 molecule

**Gene ID:**  
939

## Detection Antibody Information

**Catalog Number:**  
85066-1-PBS

**Host:**  
Rabbit

**Isotype:**  
IgG

**Purification Method:**  
Protein A purification

**Clone ID:**  
242731B7

**Reactivity:**  
human

**GenBank:**  
BC012160

**Conjugate:**  
Unconjugated

**Full name:**  
CD27 molecule

**Gene ID:**  
939

## Applications

**Tested Applications:**  
Sandwich ELISA

**Range:**  
0.156-10 ng/mL (Sandwich ELISA)

**Recommended Dilutions:**  
It is recommended that this reagent should be titrated in each testing system to obtain optimal results.

## Product Information

MP01811-3 targets CD27 in immunoassays as a matched antibody pair. Validated in Sandwich ELISA.

Capture antibody: CD27 Recombinant antibody, PBS Only (Capture) 85066-3-PBS (242731G8). 100 µg. Concentration 1 mg/mL.

Detection antibody: CD27 Recombinant antibody, PBS Only (Detector) 85066-1-PBS (242731B7). 100 µg. Concentration 1 mg/mL.

Unconjugated rabbit recombinant monoclonal antibody pair in PBS only storage buffer at a concentration of 1 mg/mL, ready for conjugation. Created using Proteintech's proprietary in-house recombinant technology. Recombinant production enables unrivalled batch-to-batch consistency, easy scale-up, and future security of supply.

Matched antibody pairs are designed for use in a variety of assays and platforms that require matched antibody pairs.

Antibody use should be optimized for each application and assay.

## Storage

**Storage:**  
Store at -80°C.

**The product is shipped with ice packs. Upon receipt, store it immediately at -80°C**

**Storage buffer:**  
PBS only

For technical support and original validation data for this product please contact:

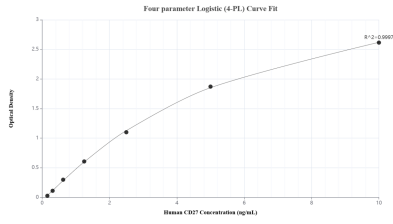
T: 4006900926

E: Proteintech-CN@ptglab.com

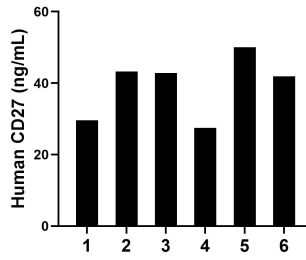
W: ptgcn.com

**This product is exclusively available under Proteintech Group brand and is not available to purchase from any other manufacturer.**

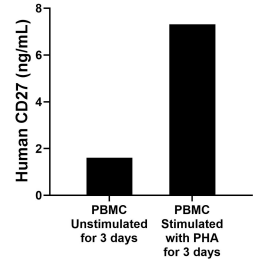
## Selected Validation Data



Sandwich ELISA standard curve of MP01811-3, Human CD27 Recombinant Matched Antibody Pair - PBS only. 85066-3-PBS was coated to a plate as the capture antibody and incubated with serial dilutions of standard Eg1644. 85066-1-PBS was HRP conjugated as the detection antibody. Range: 0.156-10 ng/mL.



Serum of six individual healthy human donors was measured. The CD27 concentration of detected samples was determined to be 39.19 ng/mL with a range of 27.45-50.05 ng/mL.



Human peripheral blood mononuclear cells (PBMC) were cultured unstimulated or stimulated with 10  $\mu$ g/mL PHA for 3 days. The mean CD27 concentration was determined to be 1.61 ng/mL in unstimulated PBMC supernatant, 7.31 ng/mL in PHA stimulated PBMC supernatant.