

For Research Use Only

LAMB3 Recombinant Matched Antibody Pair, PBS Only



Catalog Number:MP01812-1

Capture Antibody Information

Catalog Number:
85055-2-PBS

Host:
Rabbit

Isotype:
IgG

Purification Method:
Protein A purification

Clone ID:
242442G1

Reactivity:
human

GenBank:
BC075838

Immunogen Catalog Number:
Ag25192

Conjugate:
Unconjugated

Full name:
laminin, beta 3

Gene ID:
3914

Detection Antibody Information

Catalog Number:
85055-3-PBS

Host:
Rabbit

Isotype:
IgG

Purification Method:
Protein A purification

Clone ID:
242442G2

Reactivity:
human

GenBank:
BC075838

Immunogen Catalog Number:
Ag25192

Conjugate:
Unconjugated

Full name:
laminin, beta 3

Gene ID:
3914

Applications

Tested Applications:
Cytometric bead array, Sandwich ELISA

Range:
0.781-100 ng/mL (Cytometric Bead Array)
78.1-5000 pg/mL (Sandwich ELISA)

Recommended Dilutions:
It is recommended that this reagent should be titrated in each testing system to obtain optimal results.

Product Information

MP01812-1 targets LAMB3 in immunoassays as a matched antibody pair. Validated in Cytometric bead array, Sandwich ELISA.

Capture antibody: LAMB3 Recombinant antibody, PBS Only (Capture) 85055-2-PBS (242442G1). 100 µg. Concentration 1 mg/mL.

Detection antibody: LAMB3 Recombinant antibody, PBS Only (Detector) 85055-3-PBS (242442G2). 100 µg. Concentration 1 mg/mL.

Unconjugated rabbit recombinant monoclonal antibody pair in PBS only storage buffer at a concentration of 1 mg/mL, ready for conjugation. Created using Proteintech's proprietary in-house recombinant technology. Recombinant production enables unrivalled batch-to-batch consistency, easy scale-up, and future security of supply.

Matched antibody pairs are designed for use in a variety of assays and platforms that require matched antibody pairs.

Antibody use should be optimized for each application and assay.

Storage

Storage:
Store at -80°C.

The product is shipped with ice packs. Upon receipt, store it immediately at -80°C

Storage buffer:
PBS only

For technical support and original validation data for this product please contact:

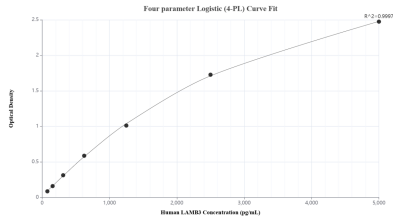
T: 4006900926

E: Proteintech-CN@ptglab.com

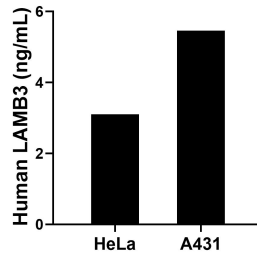
W: ptgcn.com

This product is exclusively available under Proteintech Group brand and is not available to purchase from any other manufacturer.

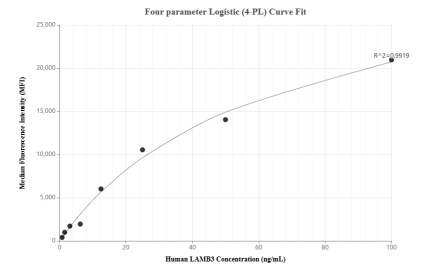
Selected Validation Data



Sandwich ELISA standard curve of MP01812-1, Human LAMB3 Recombinant Matched Antibody Pair - PBS only. 85055-2-PBS was coated to a plate as the capture antibody and incubated with serial dilutions of standard Ag25192. 85055-3-PBS was HRP conjugated as the detection antibody. Range: 78.1-5000 pg/mL



The mean LAMB3 concentration was determined to be 3.1 ng/mL in HeLa cell extract based on a 1.5 mg/mL extract load and 5.5 ng/mL in A431 cell extract based on a 1.5 mg/mL extract load.



Cytometric bead array standard curve of MP01812-1, LAMB3 Recombinant Matched Antibody Pair, PBS Only. Capture antibody: 85055-2-PBS. Detection antibody: 85055-3-PBS. Standard: Ag25192. Range: 0.781-100 ng/mL