

For Research Use Only

GBE1 Recombinant Matched Antibody Pair, PBS Only



Catalog Number:MP01824-3

Capture Antibody Information

Catalog Number:
85143-6-PBS
Host:
Rabbit
Isotype:
IgG
Purification Method:
Protein A purification

Clone ID:
242705E6
Reactivity:
human
GenBank:
BC012098
Immunogen Catalog Number:
Ag14154

Conjugate:
Unconjugated
Full name:
glucan (1,4-alpha-), branching enzyme 1
Gene ID:
2632

Detection Antibody Information

Catalog Number:
85143-3-PBS
Host:
Rabbit
Isotype:
IgG
Purification Method:
Protein A purification

Clone ID:
242705F2
Reactivity:
human
GenBank:
BC012098
Immunogen Catalog Number:
Ag14154

Conjugate:
Unconjugated
Full name:
glucan (1,4-alpha-), branching enzyme 1
Gene ID:
2632

Applications

Tested Applications:
Sandwich ELISA

Range:
1.96-125 ng/mL (Sandwich ELISA)

Recommended Dilutions:
It is recommended that this reagent should be titrated in each testing system to obtain optimal results.

Product Information

MP01824-3 targets GBE1 in immunoassays as a matched antibody pair. Validated in Sandwich ELISA.

Capture antibody: GBE1 Recombinant antibody, PBS Only (Capture) 85143-6-PBS (242705E6). 100 µg. Concentration 1 mg/mL.

Detection antibody: GBE1 Recombinant antibody, PBS Only (Detector) 85143-3-PBS (242705F2). 100 µg. Concentration 1 mg/mL.

Unconjugated rabbit recombinant monoclonal antibody pair in PBS only storage buffer at a concentration of 1 mg/mL, ready for conjugation. Created using Proteintech's proprietary in-house recombinant technology. Recombinant production enables unrivalled batch-to-batch consistency, easy scale-up, and future security of supply.

Matched antibody pairs are designed for use in a variety of assays and platforms that require matched antibody pairs.

Antibody use should be optimized for each application and assay.

Storage

Storage:
Store at -80°C.
The product is shipped with ice packs. Upon receipt, store it immediately at -80°C
Storage buffer:
PBS only

For technical support and original validation data for this product please contact:

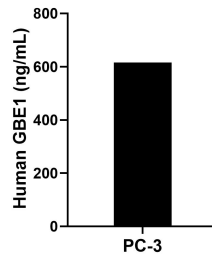
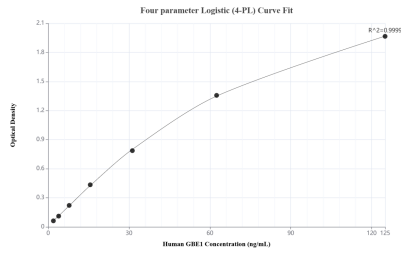
T: 4006900926

E: Proteintech-CN@ptglab.com

W: ptgcn.com

This product is exclusively available under Proteintech Group brand and is not available to purchase from any other manufacturer.

Selected Validation Data



Sandwich ELISA standard curve of MP01824-3, Human GBE1 Recombinant Matched Antibody Pair - PBS only. 85143-6-PBS was coated to a plate as the capture antibody and incubated with serial dilutions of standard Ag14154. 85143-3-PBS was HRP conjugated as the detection antibody. Range: 1.96-125 ng/mL

The mean GBE1 concentration was determined to be 615.46 ng/mL in PC-3 cell extract based on a 2.50 mg/mL extract load.