

For Research Use Only

MCT2/SLC16A7 Recombinant Matched Antibody Pair, PBS Only



Catalog Number:MP01851-1

Capture Antibody Information

Catalog Number:
85145-1-PBS
Host:
Rabbit
Isotype:
IgG
Purification Method:
Protein A purification

Clone ID:
242811E4
Reactivity:
human
GenBank:
BC030693
Immunogen Catalog Number:
Ag14201

Conjugate:
Unconjugated
Full name:
solute carrier family 16, member 7 (monocarboxylic acid transporter 2)
Gene ID:
9194

Detection Antibody Information

Catalog Number:
85145-2-PBS
Host:
Rabbit
Isotype:
IgG
Purification Method:
Protein A purification

Clone ID:
242811H4
Reactivity:
human
GenBank:
BC030693
Immunogen Catalog Number:
Ag14201

Conjugate:
Unconjugated
Full name:
solute carrier family 16, member 7 (monocarboxylic acid transporter 2)
Gene ID:
9194

Applications

Tested Applications:
Cytometric bead array, Sandwich ELISA

Range:
0.625-80 ng/mL (Cytometric Bead Array)
39.1-1250 pg/mL (Sandwich ELISA)

Recommended Dilutions:
It is recommended that this reagent should be titrated in each testing system to obtain optimal results.

Product Information

MP01851-1 targets MCT2/SLC16A7 in immunoassays as a matched antibody pair. Validated in Cytometric bead array, Sandwich ELISA.

Capture antibody: SLC16A7 Recombinant antibody, PBS Only (Capture) 85145-1-PBS (242811E4). 100 µg. Concentration 1 mg/mL.

Detection antibody: SLC16A7 Recombinant antibody, PBS Only (Detector) 85145-2-PBS (242811H4). 100 µg. Concentration 1 mg/mL.

Unconjugated rabbit recombinant monoclonal antibody pair in PBS only storage buffer at a concentration of 1 mg/mL, ready for conjugation. Created using Proteintech's proprietary in-house recombinant technology. Recombinant production enables unrivalled batch-to-batch consistency, easy scale-up, and future security of supply.

Matched antibody pairs are designed for use in a variety of assays and platforms that require matched antibody pairs.

Antibody use should be optimized for each application and assay.

Storage

Storage:
Store at -80°C.

The product is shipped with ice packs. Upon receipt, store it immediately at -80°C

Storage buffer:
PBS only

For technical support and original validation data for this product please contact:

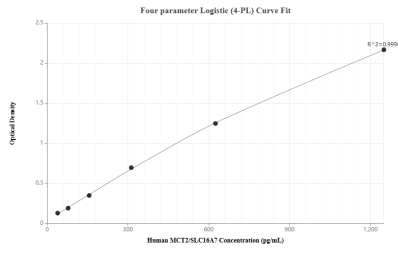
T: 4006900926

E: Proteintech-CN@ptglab.com

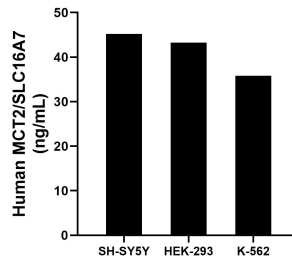
W: ptgcn.com

This product is exclusively available under Proteintech Group brand and is not available to purchase from any other manufacturer.

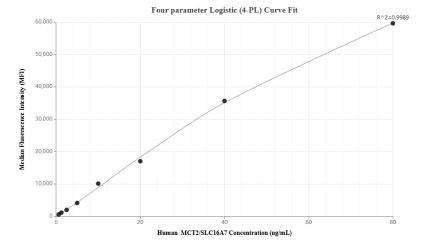
Selected Validation Data



Sandwich ELISA standard curve of MP01823-2, Humanc MCT2/SLC 16A7 Recombinant Matched Antibody Pair - PBS only. 85145-1-PBS was coated to a plate as the capture antibody and incubated with serial dilutions of standard Ag14201. 85145-2-PBS was HRP conjugated as the detection antibody. Range: 39.1-1250 pg/mL



The mean MCT2/SLC16A7 concentration was determined to be 45.22 ng/mL in SH-SY5Y cell extract based on a 3.2 mg/mL extract load, 43.27 ng/mL in HEK-293 cell extract based on a 2.7 mg/mL extract load and 35.80 ng/mL in K-562 cell extract based on a 2.5 mg/mL extract load.



Cytometric bead array standard curve of MP01851-1, MCT2/SLC 16A7 Recombinant Matched Antibody Pair, PBS Only. Capture antibody: 85145-1-PBS. Detection antibody: 85145-2-PBS. Standard: Ag14201. Range: 0.625-80 ng/mL