

For Research Use Only

# IRF9 Recombinant Matched Antibody Pair, PBS Only



Catalog Number:MP01881-3

## Capture Antibody Information

Catalog Number:  
85160-4-PBS

Host:  
Rabbit

Isotype:  
IgG

Purification Method:  
Protein A purification

Clone ID:  
242772G1

Reactivity:  
human

GenBank:  
BC035716

Immunogen Catalog Number:  
Ag5365

Conjugate:  
Unconjugated

Full name:  
IRF 9

Gene ID:  
10379

## Detection Antibody Information

Catalog Number:  
85160-5-PBS

Host:  
Rabbit

Isotype:  
IgG

Purification Method:  
Protein A purification

Clone ID:  
242772A2

Reactivity:  
human

GenBank:  
BC035716

Immunogen Catalog Number:  
Ag5365

Conjugate:  
Unconjugated

Full name:  
IRF 9

Gene ID:  
10379

## Applications

Tested Applications:  
Sandwich ELISA

Range:  
0.391-25 ng/mL (Sandwich ELISA)

Recommended Dilutions:  
It is recommended that this reagent should be titrated in each testing system to obtain optimal results.

## Product Information

MP01881-3 targets IRF9 in immunoassays as a matched antibody pair. Validated in Sandwich ELISA.

Capture antibody: IRF9 Recombinant antibody, PBS Only (Capture) 85160-4-PBS (242772G1). 100  $\mu$ g. Concentration 1 mg/mL.

Detection antibody: IRF9 Recombinant antibody, PBS Only (Detector) 85160-5-PBS (242772A2). 100  $\mu$ g. Concentration 1 mg/mL.

Unconjugated rabbit recombinant monoclonal antibody pair in PBS only storage buffer at a concentration of 1 mg/mL, ready for conjugation. Created using Proteintech's proprietary in-house recombinant technology. Recombinant production enables unrivalled batch-to-batch consistency, easy scale-up, and future security of supply.

Matched antibody pairs are designed for use in a variety of assays and platforms that require matched antibody pairs.

Antibody use should be optimized for each application and assay.

## Storage

Storage:

Store at -80°C.

The product is shipped with ice packs. Upon receipt, store it immediately at -80°C

Storage buffer:  
PBS only

For technical support and original validation data for this product please contact:

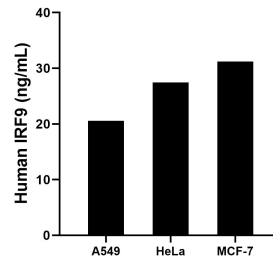
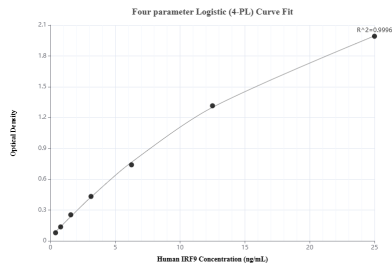
T: 4006900926

E: Proteintech-CN@ptglab.com

W: ptgcn.com

This product is exclusively available under Proteintech Group brand and is not available to purchase from any other manufacturer.

## Selected Validation Data



Sandwich ELISA standard curve of MP01881-3, Human IRF9 Recombinant Matched Antibody Pair - PBS only. 85160-4-PBS was coated to a plate as the capture antibody and incubated with serial dilutions of standard Ag5365. 85160-5-PBS was HRP conjugated as the detection antibody. Range: 0.391-25 ng/mL

The mean IRF9 concentration was determined to be 20.54 ng/mL in A549 cell extract based on a 2.6 mg/mL extract load, 27.43 ng/mL in HeLa cell extract based on a 1.5 mg/mL extract load and 31.22 ng/mL in MCF-7 cell extract based on a 3.5 mg/mL extract load.