

# ILK Recombinant Matched Antibody Pair, PBS Only

Catalog Number: **MP01945-3**

## Capture Antibody Information

<b>Catalog Number:</b> 85428-7-PBS	<b>Clone ID:</b> 242982B5	<b>Conjugate:</b> Unconjugated
<b>Host:</b> Rabbit	<b>Reactivity:</b> human	<b>Full name:</b> integrin-linked kinase
<b>Isotype:</b> IgG	<b>GenBank:</b> BC001554	<b>Gene ID:</b> 3611
<b>Purification Method:</b> Protein A purification	<b>Immunogen Catalog Number:</b> Ag3570	

## Detection Antibody Information

<b>Catalog Number:</b> 85428-6-PBS	<b>Clone ID:</b> 242982B10	<b>Conjugate:</b> Unconjugated
<b>Host:</b> Rabbit	<b>Reactivity:</b> human	<b>Full name:</b> integrin-linked kinase
<b>Isotype:</b> IgG	<b>GenBank:</b> BC001554	<b>Gene ID:</b> 3611
<b>Purification Method:</b> Protein A purification	<b>Immunogen Catalog Number:</b> Ag3570	

## Applications

<b>Tested Applications:</b> Sandwich ELISA	<b>Range:</b> 0.313-20 ng/mL (Sandwich ELISA)	<b>Recommended Dilutions:</b> It is recommended that this reagent should be titrated in each testing system to obtain optimal results.
---	--	---

## Product Information

MP01945-3 targets ILK in immunoassays as a matched antibody pair. Validated in Sandwich ELISA.

Capture antibody: ILK Recombinant antibody, PBS Only (Capture) 85428-7-PBS (242982B5). 100 µg. Concentration 1 mg/mL.

Detection antibody: ILK Recombinant antibody, PBS Only (Detector) 85428-6-PBS (242982B10). 100 µg. Concentration 1 mg/mL.

Unconjugated rabbit recombinant monoclonal antibody pair in PBS only storage buffer at a concentration of 1 mg/mL, ready for conjugation. Created using Proteintech's proprietary in-house recombinant technology. Recombinant production enables unrivalled batch-to-batch consistency, easy scale-up, and future security of supply.

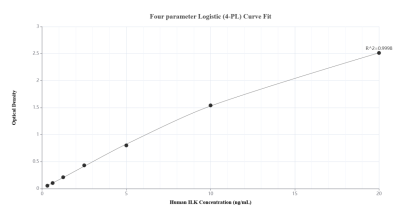
Matched antibody pairs are designed for use in a variety of assays and platforms that require matched antibody pairs.

Antibody use should be optimized for each application and assay.

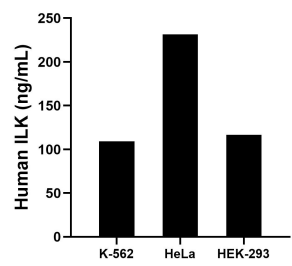
## Storage

**Storage:**  
Store at -80°C.  
**The product is shipped with ice packs. Upon receipt, store it immediately at -80°C**  
**Storage buffer:**  
PBS only

## Selected Validation Data



Sandwich ELISA standard curve of MP01945-3, Human ILK Recombinant Matched Antibody Pair - PBS only. 85428-7-PBS was coated to a plate as the capture antibody and incubated with serial dilutions of standard Ag3570. 85428-6-PBS was HRP conjugated as the detection antibody. Range: 0.313-20 ng/mL



The mean ILK concentration was determined to be 109.04 ng/mL in K-562 cell extract based on a 3.00 mg/mL extract load, 231.54 ng/mL in HeLa cell extract based on a 3.00 mg/mL extract load and 116.50 ng/mL in HEK-293 cell extract based on a 4.50 mg/mL extract load.