

For Research Use Only

Filamin B Recombinant Matched Antibody Pair, PBS Only



Catalog Number:MP01960-1

Capture Antibody Information

Catalog Number:
85202-2-PBS
Host:
Rabbit
Isotype:
IgG
Purification Method:
Protein A purification

Clone ID:
242275E7
Reactivity:
human
GenBank:
NM_001457

Conjugate:
Unconjugated
Full name:
filamin B, beta (actin binding protein 278)
Gene ID:
2317

Detection Antibody Information

Catalog Number:
85202-1-PBS
Host:
Rabbit
Isotype:
IgG
Purification Method:
Protein A purification

Clone ID:
242275B7
Reactivity:
human
GenBank:
NM_001457

Conjugate:
Unconjugated
Full name:
filamin B, beta (actin binding protein 278)
Gene ID:
2317

Applications

Tested Applications:
Sandwich ELISA

Range:
78.1-5000 pg/mL (Sandwich ELISA)

Recommended Dilutions:
It is recommended that this reagent should be titrated in each testing system to obtain optimal results.

Product Information

MP01960-1 targets Filamin B in immunoassays as a matched antibody pair. Validated in Sandwich ELISA.

Capture antibody: Filamin B Recombinant antibody, PBS Only (Capture) 85202-2-PBS (242275E7). 100 µg. Concentration 1 mg/mL.

Detection antibody: Filamin B Recombinant antibody, PBS Only (Detector) 85202-1-PBS (242275B7). 100 µg. Concentration 1 mg/mL.

Unconjugated rabbit recombinant monoclonal antibody pair in PBS only storage buffer at a concentration of 1 mg/mL, ready for conjugation. Created using Proteintech's proprietary in-house recombinant technology. Recombinant production enables unrivalled batch-to-batch consistency, easy scale-up, and future security of supply.

Matched antibody pairs are designed for use in a variety of assays and platforms that require matched antibody pairs.

Antibody use should be optimized for each application and assay.

Storage

Storage:
Store at -80°C.
The product is shipped with ice packs. Upon receipt, store it immediately at -80°C
Storage buffer:
PBS only

For technical support and original validation data for this product please contact:

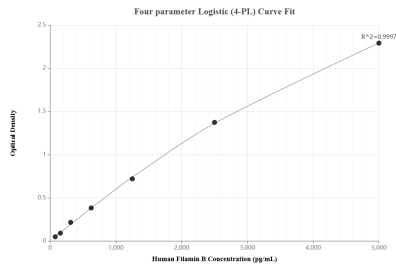
T: 4006900926

E: Proteintech-CN@ptglab.com

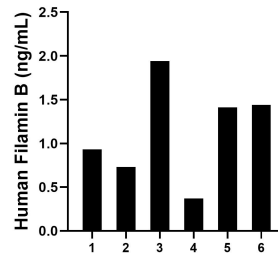
W: ptgcn.com

This product is exclusively available under Proteintech Group brand and is not available to purchase from any other manufacturer.

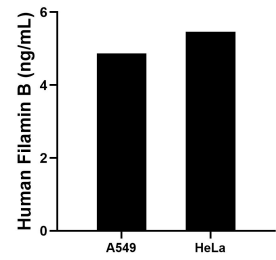
Selected Validation Data



Sandwich ELISA standard curve of MP01960-1, Human Filamin B Recombinant Matched Antibody Pair - PBS only. 85202-2-PBS was coated to a plate as the capture antibody and incubated with serial dilutions of standard SY00901. 85202-1-PBS was HRP conjugated as the detection antibody. Range: 78.1-5000 pg/mL



Serum of six individual healthy human donors was measured. The Filamin B concentration of detected samples was determined to be 1.1 ng/mL with a range of 0.4-1.9 ng/mL.



The mean Filamin B concentration was determined to be 4.9 ng/mL in A549 cell extract based on a 2.6 mg/mL extract load and 5.5 ng/mL in HeLa cell extract based on a 1.5 mg/mL extract load.