

For Research Use Only

# Chromogranin A Recombinant Matched Antibody Pair, PBS Only



Catalog Number:MP01975-1

## Capture Antibody Information

**Catalog Number:**  
85605-4-PBS  
**Host:**  
Rabbit  
**Isotype:**  
IgG  
**Purification Method:**  
Protein A purification

**Clone ID:**  
243048F1  
**Reactivity:**  
human  
**GenBank:**  
BC006459  
**Immunogen Catalog Number:**  
Ag19780

**Conjugate:**  
Unconjugated  
**Full name:**  
chromogranin A (parathyroid  
secretory protein 1)  
**Gene ID:**  
1113

## Detection Antibody Information

**Catalog Number:**  
85605-3-PBS  
**Host:**  
Rabbit  
**Isotype:**  
IgG  
**Purification Method:**  
Protein A purification

**Clone ID:**  
243048B9  
**Reactivity:**  
human  
**GenBank:**  
BC006459  
**Immunogen Catalog Number:**  
Ag19780

**Conjugate:**  
Unconjugated  
**Full name:**  
chromogranin A (parathyroid  
secretory protein 1)  
**Gene ID:**  
1113

## Applications

**Tested Applications:**  
Cytometric bead array, Sandwich  
ELISA

**Range:**  
0.781-100 ng/mL (Cytometric Bead  
Array)  
0.156-10 ng/mL (Sandwich ELISA)

**Recommended Dilutions:**  
It is recommended that this reagent  
should be titrated in each testing  
system to obtain optimal results.

## Product Information

MP01975-1 targets Chromogranin A in immunoassays as a matched antibody pair. Validated in Cytometric bead array, Sandwich ELISA.

Capture antibody: CHGA Recombinant antibody, PBS Only (Capture) 85605-4-PBS (243048F1). 100 µg. Concentration 1 mg/mL.

Detection antibody: CHGA Recombinant antibody, PBS Only (Detector) 85605-3-PBS (243048B9). 100 µg. Concentration 1 mg/mL.

Unconjugated rabbit recombinant monoclonal antibody pair in PBS only storage buffer at a concentration of 1 mg/mL, ready for conjugation. Created using Proteintech's proprietary in-house recombinant technology. Recombinant production enables unrivalled batch-to-batch consistency, easy scale-up, and future security of supply.

Matched antibody pairs are designed for use in a variety of assays and platforms that require matched antibody pairs.

Antibody use should be optimized for each application and assay.

## Storage

**Storage:**  
Store at -80°C.

**The product is shipped with ice packs. Upon receipt, store it immediately at -80°C**

**Storage buffer:**  
PBS only

For technical support and original validation data for this product please contact:

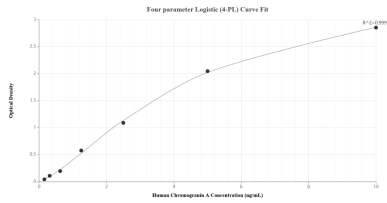
T: 4006900926

E: Proteintech-CN@ptglab.com

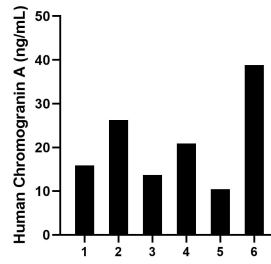
W: ptgcn.com

**This product is exclusively available under Proteintech Group brand and is not available to purchase from any other manufacturer.**

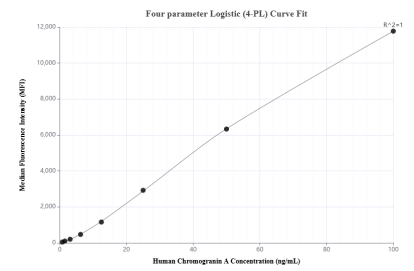
## Selected Validation Data



Sandwich ELISA standard curve of MP01975-1, Human Chromogranin A Recombinant Matched Antibody Pair - PBS only. 85605-4-PBS was coated to a plate as the capture antibody and incubated with serial dilutions of standard Ag19780. 85605-3-PBS was HRP conjugated as the detection antibody. Range: 0.156-10 ng/mL



Serum of six individual healthy human donors was measured. The Chromogranin A concentration of detected samples was determined to be 21.01 ng/mL with a range of 10.47-38.83 ng/mL.



Cytometric bead array standard curve of MP01975-1, Chromogranin A Recombinant Matched Antibody Pair, PBS Only. Capture antibody: 85605-4-PBS. Detection antibody: 85605-3-PBS. Standard: Ag19780. Range: 0.781-100 ng/mL