

# C1S Recombinant Matched Antibody Pair, PBS Only

Catalog Number: MP02077-3

## Capture Antibody Information

**Catalog Number:**  
85736-5-PBS  
**Host:**  
Rabbit  
**Isotype:**  
IgG  
**Purification Method:**  
Protein A purification

**Clone ID:**  
250031G6  
**Reactivity:**  
human  
**GenBank:**  
BC056903  
**Immunogen Catalog Number:**  
Ag5977

**Conjugate:**  
Unconjugated  
**Full name:**  
complement component 1, s subcomponent  
**Gene ID:**  
716

## Detection Antibody Information

**Catalog Number:**  
85736-3-PBS  
**Host:**  
Rabbit  
**Isotype:**  
IgG  
**Purification Method:**  
Protein A purification

**Clone ID:**  
250031C10  
**Reactivity:**  
human  
**GenBank:**  
BC056903  
**Immunogen Catalog Number:**  
Ag5977

**Conjugate:**  
Unconjugated  
**Full name:**  
complement component 1, s subcomponent  
**Gene ID:**  
716

## Applications

**Tested Applications:**  
Sandwich ELISA

**Range:**  
0.313-20 ng/mL (Sandwich ELISA)

**Recommended Dilutions:**  
It is recommended that this reagent should be titrated in each testing system to obtain optimal results.

## Product Information

MP02077-3 targets C1S in immunoassays as a matched antibody pair. Validated in Sandwich ELISA.

Capture antibody: C1S Recombinant monoclonal antibody, PBS Only (Capture) 85736-5-PBS (250031G6). 100 µg. Concentration 1 mg/mL.

Detection antibody: C1S Recombinant monoclonal antibody, PBS Only (Detector) 85736-3-PBS (250031C10). 100 µg. Concentration 1 mg/mL.

Unconjugated rabbit recombinant monoclonal antibody pair in PBS only storage buffer at a concentration of 1 mg/mL, ready for conjugation. Created using Proteintech's proprietary in-house recombinant technology. Recombinant production enables unrivalled batch-to-batch consistency, easy scale-up, and future security of supply.

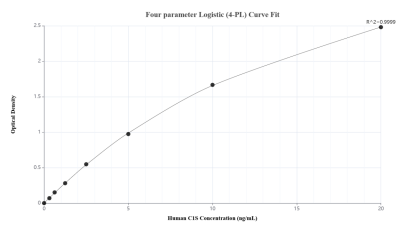
Matched antibody pairs are designed for use in a variety of assays and platforms that require matched antibody pairs.

Antibody use should be optimized for each application and assay.

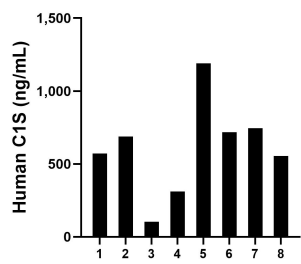
## Storage

**Storage:**  
Store at -80°C.  
**The product is shipped with ice packs. Upon receipt, store it immediately at -80°C**  
**Storage buffer:**  
PBS only

## Selected Validation Data



Sandwich ELISA standard curve of MP02077-3, Human C1S Recombinant Matched Antibody Pair - PBS only. 85736-5-PBS was coated to a plate as the capture antibody and incubated with serial dilutions of standard Ag5977. 85736-3-PBS was HRP conjugated as the detection antibody. Range: 0.313-20 ng/mL.



Serum of eight individual healthy human donors was measured. The C1S concentration of detected samples was determined to be 610.10 ng/mL with a range of 102.92-1,188.99 ng/mL.