

For Research Use Only

# SPR Recombinant Matched Antibody Pair, PBS Only



Catalog Number:MP02100-2

## Capture Antibody Information

**Catalog Number:**  
85796-3-PBS  
**Host:**  
Rabbit  
**Isotype:**  
IgG  
**Purification Method:**  
Protein A purification

**Clone ID:**  
243138C1  
**Reactivity:**  
human  
**GenBank:**  
BC017310  
**Immunogen Catalog Number:**  
Ag10395

**Conjugate:**  
Unconjugated  
**Full name:**  
sepiapterin reductase (7,8-dihydrobiopterin:NADP+ oxidoreductase)  
**Gene ID:**  
6697

## Detection Antibody Information

**Catalog Number:**  
85796-2-PBS  
**Host:**  
Rabbit  
**Isotype:**  
IgG  
**Purification Method:**  
Protein A purification

**Clone ID:**  
243138D11  
**Reactivity:**  
human  
**GenBank:**  
BC017310  
**Immunogen Catalog Number:**  
Ag10395

**Conjugate:**  
Unconjugated  
**Full name:**  
sepiapterin reductase (7,8-dihydrobiopterin:NADP+ oxidoreductase)  
**Gene ID:**  
6697

## Applications

**Tested Applications:**  
Cytometric bead array, Sandwich ELISA

**Range:**  
0.781-100 ng/mL (Cytometric Bead Array)  
0.156-10 ng/mL (Sandwich ELISA)

**Recommended Dilutions:**  
It is recommended that this reagent should be titrated in each testing system to obtain optimal results.

## Product Information

MP02100-2 targets SPR in immunoassays as a matched antibody pair. Validated in Cytometric bead array, Sandwich ELISA.

Capture antibody: SPR Recombinant antibody, PBS Only (Capture) 85796-3-PBS (243138C1). 100 µg. Concentration 1 mg/mL.

Detection antibody: SPR Recombinant antibody, PBS Only (Detector) 85796-2-PBS (243138D11). 100 µg. Concentration 1 mg/mL.

Unconjugated rabbit recombinant monoclonal antibody pair in PBS only storage buffer at a concentration of 1 mg/mL, ready for conjugation. Created using Proteintech's proprietary in-house recombinant technology. Recombinant production enables unrivalled batch-to-batch consistency, easy scale-up, and future security of supply.

Matched antibody pairs are designed for use in a variety of assays and platforms that require matched antibody pairs.

Antibody use should be optimized for each application and assay.

## Storage

**Storage:**  
Store at -80°C.  
**The product is shipped with ice packs. Upon receipt, store it immediately at -80°C**  
**Storage buffer:**  
PBS only

For technical support and original validation data for this product please contact:

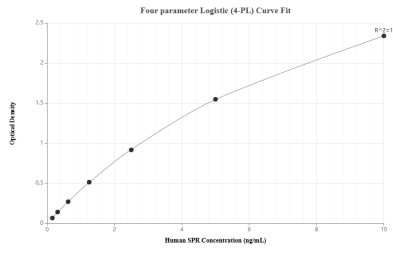
T: 4006900926

E: Proteintech-CN@ptglab.com

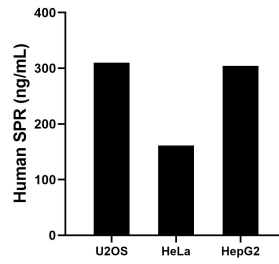
W: ptgcn.com

**This product is exclusively available under Proteintech Group brand and is not available to purchase from any other manufacturer.**

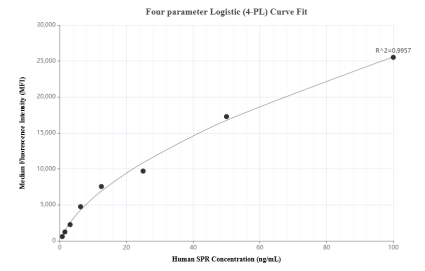
## Selected Validation Data



Sandwich ELISA standard curve of MP02100-2, Human SPR Recombinant Matched Antibody Pair - PBS only. 85796-3-PBS was coated to a plate as the capture antibody and incubated with serial dilutions of standard Ag10395. 85796-2-PBS was HRP conjugated as the detection antibody. Range: 0.156-10 ng/mL



The mean SPR concentration was determined to be 309.85 ng/mL in U2OS cell extract based on a 1.4 mg/mL extract load, 161.50 ng/mL in HeLa cell extract based on a 1.8 mg/mL extract load and 304.52 ng/mL in HepG2 cell extract based on a 1.8 mg/mL extract load.



Cytometric bead array standard curve of MP02100-2, SPR Recombinant Matched Antibody Pair, PBS Only. Capture antibody: 85796-3-PBS. Detection antibody: 85796-2-PBS. Standard: Ag10395. Range: 0.781-100 ng/mL