

Myogenin Recombinant Matched Antibody Pair, PBS Only

Catalog Number: MP02266-1

Capture Antibody Information

Catalog Number: 86192-2-PBS	Clone ID: 250187F10	Conjugate: Unconjugated
Host: Rabbit	Reactivity: human	Full name: myogenin (myogenic factor 4)
Isotype: IgG	GenBank: BC053899	Gene ID: 4656
Purification Method: Protein A purification	Immunogen Catalog Number: Ag25081	

Detection Antibody Information

Catalog Number: 86192-1-PBS	Clone ID: 250187E3	Conjugate: Unconjugated
Host: Rabbit	Reactivity: human	Full name: myogenin (myogenic factor 4)
Isotype: IgG	GenBank: BC053899	Gene ID: 4656
Purification Method: Protein A purification	Immunogen Catalog Number: Ag25081	

Applications

Tested Applications: Sandwich ELISA	Range: 78.1-5000 pg/mL (Sandwich ELISA)	Recommended Dilutions: It is recommended that this reagent should be titrated in each testing system to obtain optimal results.
--	--	--

Product Information

MP02266-1 targets Myogenin in immunoassays as a matched antibody pair. Validated in Sandwich ELISA.

Capture antibody: Myogenin Recombinant antibody, PBS Only (Capture) 86192-2-PBS (250187F10). 100 µg. Concentration 1 mg/mL.

Detection antibody: Myogenin Recombinant antibody, PBS Only (Detector) 86192-1-PBS (250187E3). 100 µg. Concentration 1 mg/mL.

Unconjugated rabbit recombinant monoclonal antibody pair in PBS only storage buffer at a concentration of 1 mg/mL, ready for conjugation. Created using Proteintech's proprietary in-house recombinant technology. Recombinant production enables unrivalled batch-to-batch consistency, easy scale-up, and future security of supply.

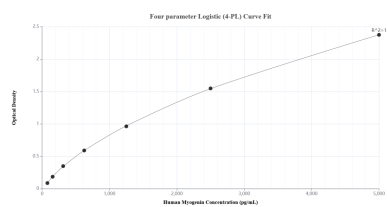
Matched antibody pairs are designed for use in a variety of assays and platforms that require matched antibody pairs.

Antibody use should be optimized for each application and assay.

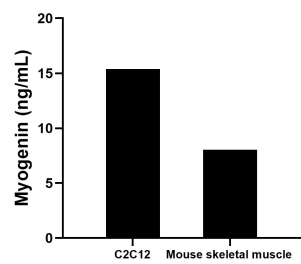
Storage

Storage:
Store at -80°C.
The product is shipped with ice packs. Upon receipt, store it immediately at -80°C
Storage buffer:
PBS only

Selected Validation Data



Sandwich ELISA standard curve of MP02266-1, Human Myogenin Recombinant Matched Antibody Pair - PBS only. 86192-2-PBS was coated to a plate as the capture antibody and incubated with serial dilutions of standard Ag25081. 86192-1-PBS was HRP conjugated as the detection antibody. Range: 78.1-5000 pg/mL.



The mean Myogenin concentration was determined to be 15.4 ng/mL in C2C12 cell extract based on a 1.4 mg/mL extract load and 8.0 ng/mL in mouse skeletal muscle tissue extract based on a 1.7 mg/mL extract load.