

For Research Use Only

# B2M Monoclonal Matched Antibody Pair, PBS Only



Catalog Number:MP50108-1

## Capture Antibody Information

Catalog Number:  
68395-2-PBS

Host:  
Mouse

Isotype:  
IgG1

Purification Method:  
Protein G purification

Clone ID:  
4B9F9

Reactivity:  
human

GenBank:  
BC032589

Conjugate:  
Unconjugated

Full name:  
beta-2-microglobulin

Gene ID:  
567

## Detection Antibody Information

Catalog Number:  
68395-3-PBS

Host:  
Mouse

Isotype:  
IgG1

Purification Method:  
Protein G purification

Clone ID:  
4D4D5

Reactivity:  
human

GenBank:  
BC032589

Conjugate:  
Unconjugated

Full name:  
beta-2-microglobulin

Gene ID:  
567

## Applications

Tested Applications:  
Cytometric bead array

Range:  
0.098-100 ng/mL (Cytometric Bead Array)

Recommended Dilutions:  
It is recommended that this reagent should be titrated in each testing system to obtain optimal results.

## Product Information

MP50108-1 targets B2M in immunoassays as a matched antibody pair. Validated in Cytometric bead array.

Capture antibody: B2M Monoclonal antibody, PBS Only (Capture) 68395-2-PBS (4B9F9). 100  $\mu$ g. Concentration 1 mg/mL.

Detection antibody: B2M Monoclonal antibody, PBS Only (Detector) 68395-3-PBS (4D4D5). 100  $\mu$ g. Concentration 1 mg/mL.

Alternative B2M matched antibody pairs: MP00673-1, MP00673-2, MP00673-3

Unconjugated mouse monoclonal antibody pair in PBS only storage buffer at a concentration of 1 mg/mL, ready for conjugation.

Matched antibody pairs are designed for use in a variety of assays and platforms that require matched antibody pairs.

Antibody use should be optimized for each application and assay.

## Storage

Storage:  
Store at -80°C.

The product is shipped with ice packs. Upon receipt, store it immediately at -80°C

Storage buffer:  
PBS only

For technical support and original validation data for this product please contact:

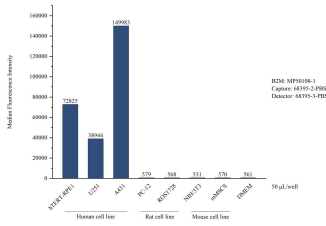
T: 4006900926

E: Proteintech-CN@ptglab.com

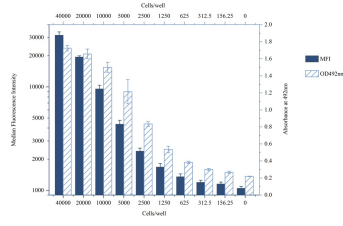
W: ptgcn.com

This product is exclusively available under Proteintech Group brand and is not available to purchase from any other manufacturer.

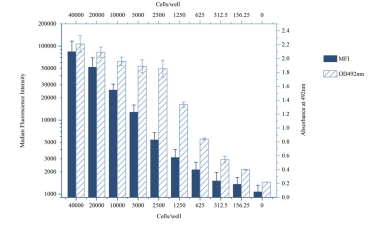
# Selected Validation Data



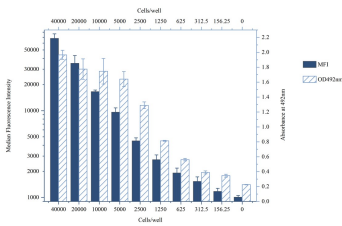
Cytometric bead array of various cell lines supernatant using MP50108-1, B2M Monoclonal Matched Antibody Pair, PBS Only. Capture antibody: 68395-2-PBS. Detection antibody: 68395-3-PBS. Supernatant (50 µL/well) from the following cell lines were assayed: hTERT-RPE1, U251, A431, PC-12, ROS1728, NIH/3T3, mMSCS. Complete culture containing DMEM and FBS was served as blank control. Note that this matched antibody pair recognizes human B2M (beta 2



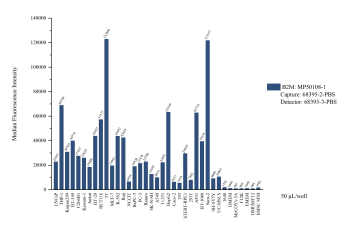
Cytometric bead array of A375 cells supernatant using MP50108-1, B2M Monoclonal Matched Antibody Pair, PBS Only. Capture antibody: 68395-2-PBS. Detection antibody: 68395-3-PBS. Gradient density (indicated at X axis) of A375 cells were inoculated in 96 well plate followed by cultured for 2 days. The supernatant was analyzed using MP50108-1 (B2M Monoclonal Matched Antibody Pair). The signal (Median Fluorescence Intensity) is highly correlated



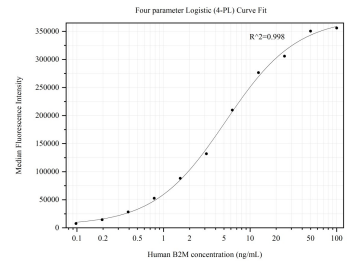
Cytometric bead array of HeLa cells supernatant using MP50108-1, B2M Monoclonal Matched Antibody Pair, PBS Only. Capture antibody: 68395-2-PBS. Detection antibody: 68395-3-PBS. Gradient density (indicated at X axis) of HeLa cells were inoculated in 96 well plate followed by cultured for 2 days. The supernatant was analyzed using MP50108-1 (B2M Monoclonal Matched Antibody Pair). The signal (Median Fluorescence Intensity) is highly correlated



Cytometric bead array of U-251 cells supernatant using MP50108-1, B2M Monoclonal Matched Antibody Pair, PBS Only. Capture antibody: 68395-2-PBS. Detection antibody: 68395-3-PBS. Gradient density (indicated at X axis) of U-251 cells were inoculated in 96 well plate followed by cultured for 2 days. The supernatant was analyzed using MP50108-1 (B2M Monoclonal Matched Antibody Pair). The signal (Median Fluorescence Intensity) is highly correlated



Cytometric bead array of various cell lines supernatant using MP50108-1, B2M Monoclonal Matched Antibody Pair, PBS Only. Capture antibody: 68395-2-PBS. Detection antibody: 68395-3-PBS. Supernatant (50 µL/well) from the following cell lines were assayed: LNCaP, THP-1, Karpas299, BT-549, HT-29, U266B1, Kasumi-1, Jurkat, HCT116, TT, MCF-7, K-562, Raji, NCCIT, BxPC-3, PC-3, Ramos, A549, SK-N-SH, U-251, HepG2, Caco-2, 293, 293T, hTERT-RPE1, A431, HT-



Cytometric bead array standard curve of MP50108-1, B2M Monoclonal Matched Antibody Pair, PBS Only. Capture antibody: 68395-2-PBS. Detection antibody: 68395-3-PBS. Standard: Eg31815. Range: 0.098-100 ng/mL