

For Research Use Only

# IL-7 Monoclonal Matched Antibody Pair, PBS Only



Catalog Number:MP50135-3

## Capture Antibody Information

**Catalog Number:**  
60206-3-PBS  
**Host:**  
Mouse  
**Isotype:**  
IgG1  
**Purification Method:**  
Protein G purification

**Clone ID:**  
5F4C1  
**Reactivity:**  
human  
**GenBank:**  
BC047698  
**Immunogen Catalog Number:**  
Ag16314

**Conjugate:**  
Unconjugated  
**Full name:**  
interleukin 7  
**Gene ID:**  
3574

## Detection Antibody Information

**Catalog Number:**  
60206-4-PBS  
**Host:**  
Mouse  
**Isotype:**  
IgG1  
**Purification Method:**  
Protein G purification

**Clone ID:**  
5H6B7  
**Reactivity:**  
human  
**GenBank:**  
BC047698  
**Immunogen Catalog Number:**  
Ag16314

**Conjugate:**  
Unconjugated  
**Full name:**  
interleukin 7  
**Gene ID:**  
3574  
**Affinity:**  
 $K_D = 4.79 \times 10^{-10}$   
 $K_{Off} = 3.61 \times 10^{-6}$   
 $K_{On} = 7.53 \times 10^3$

## Applications

**Tested Applications:**  
Cytometric bead array

**Range:**  
0.098-25 ng/mL (Cytometric Bead Array)

**Recommended Dilutions:**  
It is recommended that this reagent should be titrated in each testing system to obtain optimal results.

## Product Information

MP50135-3 targets IL-7 in immunoassays as a matched antibody pair. Validated in Cytometric bead array.

Capture antibody: IL-7 Monoclonal antibody, PBS Only (Capture) 60206-3-PBS (5F4C1). 100  $\mu$ g. Concentration 1 mg/mL.

Detection antibody: IL-7 Monoclonal antibody, PBS Only (Detector) 60206-4-PBS (5H6B7). 100  $\mu$ g. Concentration 1 mg/mL.

Unconjugated mouse monoclonal antibody pair in PBS only storage buffer at a concentration of 1 mg/mL, ready for conjugation.

Matched antibody pairs are designed for use in a variety of assays and platforms that require matched antibody pairs.

Antibody use should be optimized for each application and assay.

## Storage

**Storage:**  
Store at -80°C.

**The product is shipped with ice packs. Upon receipt, store it immediately at -80°C**

**Storage buffer:**  
PBS only

For technical support and original validation data for this product please contact:

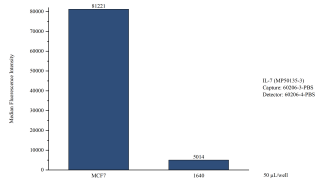
T: 4006900926

E: Proteintech-CN@ptglab.com

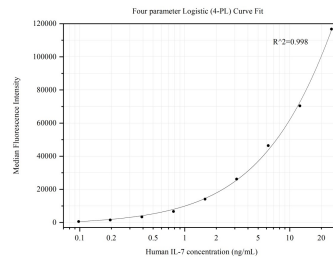
W: ptgcn.com

**This product is exclusively available under Proteintech Group brand and is not available to purchase from any other manufacturer.**

## Selected Validation Data



Cytometric bead array of MCF-7 cells supernatant using MP50135-3, IL-7 Monoclonal Matched Antibody Pair, PBS Only. Capture antibody: 60206-3-PBS. Detection antibody: 60206-4-PBS. Complete culture medium was served as blank control.



Cytometric bead array standard curve of MP50135-3, IL-7 Monoclonal Matched Antibody Pair, PBS Only. Capture antibody: 60206-3-PBS. Detection antibody: 60206-4-PBS. Standard:HZ-1281. Range: 0.098-25 ng/mL.