

For Research Use Only

# Ezrin Monoclonal Matched Antibody Pair, PBS Only



Catalog Number:MP50155-1

## Capture Antibody Information

**Catalog Number:**  
68789-1-PBS

**Host:**  
Mouse

**Isotype:**  
IgG1

**Purification Method:**  
Protein G Magarose purification

**Clone ID:**  
1C11A7

**Reactivity:**  
human

**GenBank:**  
BC013903

**Conjugate:**  
Unconjugated

**Full name:**  
ezrin

**Gene ID:**  
7430

## Detection Antibody Information

**Catalog Number:**  
68789-2-PBS

**Host:**  
Mouse

**Isotype:**  
IgG1

**Purification Method:**  
Protein G Magarose purification

**Clone ID:**  
1G12E9

**Reactivity:**  
human

**GenBank:**  
BC013903

**Conjugate:**  
Unconjugated

**Full name:**  
ezrin

**Gene ID:**  
7430

## Applications

**Tested Applications:**  
Cytometric bead array

**Range:**  
0.195-25 ng/mL (Cytometric Bead Array)

**Recommended Dilutions:**  
It is recommended that this reagent should be titrated in each testing system to obtain optimal results.

## Product Information

MP50155-1 targets Ezrin in immunoassays as a matched antibody pair. Validated in Cytometric bead array.

Capture antibody: Ezrin Monoclonal antibody, PBS Only (Capture) 68789-1-PBS (1C11A7). 100 µg. Concentration 1 mg/mL.

Detection antibody: Ezrin Monoclonal antibody, PBS Only (Detector) 68789-2-PBS (1G12E9). 100 µg. Concentration 1 mg/mL.

Unconjugated mouse monoclonal antibody pair in PBS only storage buffer at a concentration of 1 mg/mL, ready for conjugation.

Matched antibody pairs are designed for use in a variety of assays and platforms that require matched antibody pairs.

Antibody use should be optimized for each application and assay.

## Storage

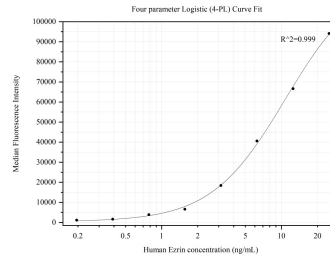
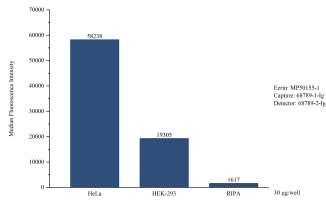
**Storage:**  
Store at -80°C.  
**The product is shipped with ice packs. Upon receipt, store it immediately at -80°C**

**Storage buffer:**  
PBS only

For technical support and original validation data for this product please contact:  
T: 4006900926 E: Proteintech-CN@ptglab.com W: ptgcn.com

**This product is exclusively available under Proteintech Group brand and is not available to purchase from any other manufacturer.**

## Selected Validation Data



Cytometric bead array in cell lysate using MP50155-1, Ezrin Monoclonal Matched Antibody Pair, PBS Only. Capture antibody: 68789-1-PBS. Detection antibody: 68789-2-PBS. Cell lysate: HeLa, HEK293. RIPA lysis buffer was served as blank control.

Cytometric bead array standard curve of MP50155-1, Ezrin Monoclonal Matched Antibody Pair, PBS Only. Capture antibody: 68789-1-PBS. Detection antibody: 68789-2-PBS. Standard:SY02111P. Range: 0.195-25 ng/mL.