

For Research Use Only

# CD200R1 Monoclonal Matched Antibody Pair, PBS Only



Catalog Number:MP50163-1

## Capture Antibody Information

Catalog Number:  
68796-1-PBS

Host:  
Mouse

Isotype:  
IgG1

Purification Method:  
Protein G Magarose purification

Clone ID:  
2C1B9

Reactivity:  
Human

GenBank:  
BC069743

Conjugate:  
Unconjugated

Full name:  
CD200 receptor 1

Gene ID:  
131450

## Detection Antibody Information

Catalog Number:  
68796-2-PBS

Host:  
Mouse

Isotype:  
IgG1

Purification Method:  
Protein G Magarose purification

Clone ID:  
2E7D1

Reactivity:  
Human

GenBank:  
BC069743

Conjugate:  
Unconjugated

Full name:  
CD200 receptor 1

Gene ID:  
131450

## Applications

Tested Applications:  
Cytometric bead array, Sandwich ELISA

Range:  
1.563-100 ng/mL (Cytometric Bead Array)

Recommended Dilutions:  
It is recommended that this reagent should be titrated in each testing system to obtain optimal results.

## Product Information

MP50163-1 targets CD200R1 in immunoassays as a matched antibody pair. Validated in Cytometric bead array, Sandwich ELISA.

Capture antibody: CD200R1 Monoclonal antibody, PBS Only (Capture) 68796-1-PBS (2C1B9). 100  $\mu$ g. Concentration 1 mg/mL.

Detection antibody: CD200R1 Monoclonal antibody, PBS Only (Detector) 68796-2-PBS (2E7D1). 100  $\mu$ g. Concentration 1 mg/mL.

Unconjugated mouse monoclonal antibody pair in PBS only (BSA and azide free) storage buffer at a concentration of 1 mg/mL, ready for conjugation.

Matched antibody pairs are designed for use in a variety of assays and platforms that require matched antibody pairs.

Antibody use should be optimized for each application and assay.

## Storage

Storage:  
Store at -80°C.  
Storage buffer:  
PBS only

For technical support and original validation data for this product please contact:

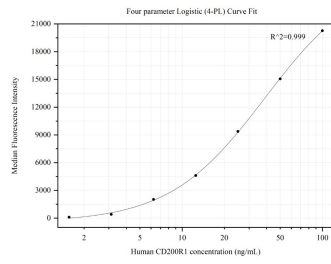
T: 4006900926

E: [Proteintech-CN@ptglab.com](mailto:Proteintech-CN@ptglab.com)

W: [ptgcn.com](http://ptgcn.com)

This product is exclusively available under Proteintech Group brand and is not available to purchase from any other manufacturer.

## Selected Validation Data



Cytometric bead array standard curve of MP50163-1, CD200R1 Monoclonal Matched Antibody Pair, PBS Only. Capture antibody: 68796-1-PBS. Detection antibody: 68796-2-PBS. Standard:Eg0011. Range: 1.563-100 ng/mL.