

For Research Use Only

Phospho-MEK1 (Thr386) Monoclonal Matched Antibody Pair, PBS Only



Catalog Number:MP50180-1

Capture Antibody Information

Catalog Number:
67872-1-PBS
Host:
Mouse
Isotype:
IgG1
Purification Method:
Protein G purification

Clone ID:
3F6D7
Reactivity:
human, mouse, rat
GenBank:
BC139729

Conjugate:
Unconjugated
Full name:
mitogen-activated protein kinase kinase 1
Gene ID:
5604

Detection Antibody Information

Catalog Number:
68015-1-PBS
Host:
Mouse
Isotype:
IgG1
Purification Method:
Protein G purification

Clone ID:
1G6A2
Reactivity:
human, mouse
GenBank:
BC139729

Conjugate:
Unconjugated
Full name:
mitogen-activated protein kinase kinase 1
Gene ID:
5604

Applications

Tested Applications:
N/A

Range:

Recommended Dilutions:
It is recommended that this reagent should be titrated in each testing system to obtain optimal results.

Product Information

MP50180-1 targets Phospho-MEK1 (Thr386) in immunoassays as a matched antibody pair. Validated in N/A.

Capture antibody: MEK1 Monoclonal antibody, PBS Only (Capture) 67872-1-PBS (3F6D7). 100 μ g. Concentration 1 mg/ml.

Detection antibody: Phospho-MEK1 (Thr386) Monoclonal antibody, PBS Only (Detector) 68015-1-PBS (1G6A2). 100 μ g. Concentration 1 mg/ml.

Unconjugated mouse monoclonal antibody pair in PBS only storage buffer at a concentration of 1 mg/ml, ready for conjugation.

Matched antibody pairs are designed for use in a variety of assays and platforms that require matched antibody pairs.

Antibody use should be optimized for each application and assay.

Storage

Storage:
Store at -80°C.
The product is shipped with ice packs. Upon receipt, store it immediately at -80°C
Storage buffer:
PBS only

For technical support and original validation data for this product please contact:

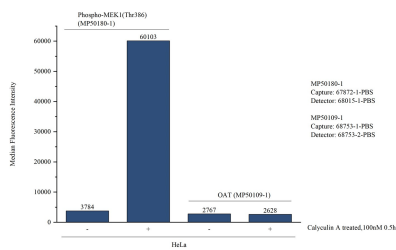
T: 4006900926

E: Proteintech-CN@ptglab.com

W: ptgcn.com

This product is exclusively available under Proteintech Group brand and is not available to purchase from any other manufacturer.

Selected Validation Data



Cytometric bead array in cell lysate using MP50180-1, Phospho-MEK1 (Thr386) Monoclonal Matched Antibody Pair, PBS Only. Capture antibody: 67872-1-PBS. Detection antibody: 68015-1-PBS. Cell lysate: Non-treated HeLa and Calyculin A treated HeLa (30 μ g/well). Non-related target OAT Monoclonal Matched Antibody Pair (MP50109-1P) was served as control.