

# Phospho-EIF2S1 (Ser51) Monoclonal Matched Antibody Pair, PBS Only

Catalog Number:MP50181-1

## Capture Antibody Information

**Catalog Number:**  
68479-1-PBS  
**Host:**  
Mouse  
**Isotype:**  
IgG1  
**Purification Method:**  
Protein G purification

**Clone ID:**  
3C8E2  
**Reactivity:**  
Human, Mouse, Rat  
**GenBank:**  
BC002513  
**Immunogen Catalog Number:**  
Ag28309

**Conjugate:**  
Unconjugated  
**Full name:**  
eukaryotic translation initiation factor 2, subunit 1 alpha, 35kDa  
**Gene ID:**  
1965

## Detection Antibody Information

**Catalog Number:**  
68023-1-PBS  
**Host:**  
Mouse  
**Isotype:**  
IgG1  
**Purification Method:**  
Protein G purification

**Clone ID:**  
1A4A11  
**Reactivity:**  
Human, Rat, Mouse  
**GenBank:**  
NM\_004094

**Conjugate:**  
Unconjugated  
**Full name:**  
eukaryotic translation initiation factor 2, subunit 1 alpha, 35kDa  
**Gene ID:**  
1965

## Applications

**Tested Applications:**  
Cytometric bead array

**Range:**

**Recommended Dilutions:**  
It is recommended that this reagent should be titrated in each testing system to obtain optimal results.

## Product Information

MP50181-1 targets Phospho-EIF2S1 (Ser51) in immunoassays as a matched antibody pair. Validated in Cytometric bead array.

Capture antibody: EIF2S1 Monoclonal antibody, PBS Only (Capture) 68479-1-PBS (3C8E2). 100 µg. Concentration 1 mg/ml.

Detection antibody: Phospho-EIF2S1 (Ser51) Monoclonal antibody, PBS Only (Detector) 68023-1-PBS (1A4A11). 100 µg. Concentration 1 mg/ml.

Unconjugated mouse monoclonal antibody pair in PBS only (BSA and azide free) storage buffer at a concentration of 1 mg/mL, ready for conjugation.

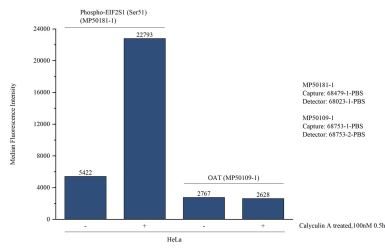
Matched antibody pairs are designed for use in a variety of assays and platforms that require matched antibody pairs.

Antibody use should be optimized for each application and assay.

## Storage

**Storage:**  
Store at -80°C.  
**Storage buffer:**  
PBS only

## Selected Validation Data



Cytometric bead array in cell lysate using MP50181-1, Phospho-EIF2S1 (Ser51) Monoclonal Matched Antibody Pair, PBS Only. Capture antibody: 68479-1-PBS. Detection antibody: 68023-1-PBS. Cell lysate: Non-treated HeLa and Calyculin A treated HeLa (30  $\mu$ g/well). Non-related target OAT Monoclonal Matched Antibody Pair (MP50109-1P) was served as control.