

For Research Use Only

Phospho-P53 (Ser15&46) Monoclonal Matched Antibody Pair, PBS Only



Catalog Number:MP50183-1

Capture Antibody Information

Catalog Number:
67826-1-PBS

Host:
Mouse

Isotype:
IgG1

Purification Method:
Protein A purification

Clone ID:
1H6G1

Reactivity:
Human

GenBank:
BC003596

Conjugate:
Unconjugated

Full name:
tumor protein p53

Gene ID:
7157

Detection Antibody Information

Catalog Number:
67900-1-PBS

Host:
Mouse

Isotype:
IgG1

Purification Method:
Protein G purification

Clone ID:
1D10A12

Reactivity:
Human

GenBank:
BC003596

Conjugate:
Unconjugated

Full name:
tumor protein p53

Gene ID:
7157

Applications

Tested Applications:
Cytometric bead array

Range:

Recommended Dilutions:
It is recommended that this reagent should be titrated in each testing system to obtain optimal results.

Product Information

MP50183-1 targets Phospho-P53 (Ser15&46) in immunoassays as a matched antibody pair. Validated in Cytometric bead array.

Capture antibody: Phospho-P53 (Ser15) Monoclonal antibody, PBS Only (Capture) 67826-1-PBS (1H6G1). 100 µg. Concentration 1 mg/ml.

Detection antibody: Phospho-P53 (Ser46) Monoclonal antibody, PBS Only (Detector) 67900-1-PBS (1D10A12). 100 µg. Concentration 1 mg/ml.

Unconjugated mouse monoclonal antibody pair in PBS only (BSA and azide free) storage buffer at a concentration of 1 mg/mL, ready for conjugation.

Matched antibody pairs are designed for use in a variety of assays and platforms that require matched antibody pairs.

Antibody use should be optimized for each application and assay.

Storage

Storage:
Store at -80°C.
Storage buffer:
PBS only

For technical support and original validation data for this product please contact:

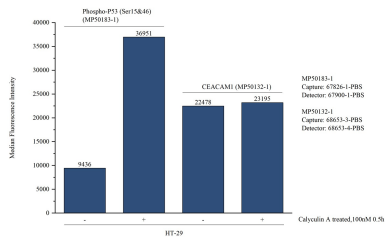
T: 4006900926

E: Proteintech-CN@ptglab.com

W: ptgcn.com

This product is exclusively available under Proteintech Group brand and is not available to purchase from any other manufacturer.

Selected Validation Data



Cytometric bead array in cell lysate using MP50183-1, Phospho-P53 (Ser15&46) Monoclonal Matched Antibody Pair, PBS Only. Capture antibody: 67826-1-PBS. Detection antibody: 67900-1-PBS. Cell lysate: Non-treated HT-29 and Calyculin A treated HT-29 (30 μg/well). Non-related target CEACAM1 Monoclonal Matched Antibody Pair (MP50132-1) was served as control.